

An oil painting of a coastal landscape. In the foreground, a calm body of water reflects the sky and the distant land. The middle ground features a small village with several white-walled houses and thatched roofs, situated on a grassy slope. Behind the village, a range of dark, rugged mountains rises against a sky filled with soft, grey clouds. The overall style is impressionistic, with visible brushstrokes and a muted color palette.

WHYTE'S  
SINCE 1783

ART ONLINE  
3 APRIL 2017



## TERMS AND CONDITIONS OF SALE NOTICE

Whyte & Sons Auctioneers Limited, trading as Whyte's, exercises all reasonable care to ensure that all descriptions are reliable and accurate, and that each item is genuine unless the contrary is indicated. However, the descriptions are not intended to be, are not and are not to be taken to be, statements of fact or representations of fact in relation to the lot. They are statements of the opinion of Whyte's, and attention is particularly drawn to clause 5 set out below. Comments and opinions, which may be found in or on lots as labels, notes, lists, catalogue prices, or any other means of expression, do not constitute part of lot descriptions and are not to be taken as such unless they are made or specifically verified by Whyte's.

### Clause 1

- (a) Each lot is put up subject to any reserve price imposed by the vendor
- (b) Subject to sub-clause (a) of this clause, the highest bidder for each lot shall be the buyer thereof
- (c) If any dispute arises as to the highest bidder the auctioneer shall have absolute discretion to determine the dispute and may put up again and re-sell the lot in respect of which the dispute arises

### Clause 2

- (a) The bidding and advances shall be regulated by and at the absolute discretion of the auctioneer and he shall have the right to refuse any bid or bids. NOTE: Where an agent bids, even on behalf of a disclosed client, the auctioneer nevertheless has the right at his discretion to refuse any such bid.
- (b) The buyer of each lot shall immediately on its sale, if required by the auctioneer, give him the name and address of the buyer and pay to Whyte's at his discretion the whole or part of the purchase money. If the buyer of any lot fails to comply with any such requirement Whyte's may put up again and re-sell the lot; if upon such re-sale a lower price is obtained than was obtained on the first sale the buyer in default on the first sale shall make good the difference in price and expenses of re-sale which shall become a debt due from him.
- (c) Where an agent purchases on behalf of an undisclosed client such agent shall be personally liable for payment of the purchase money to Whyte's and for safe delivery of the lot to the said client.

### Clause 3

- (a) Whyte's reserves the rights to bid on behalf of clients including vendors, but shall not be liable for errors or omissions in executing instructions to bid.
- (b) Whyte's reserves the rights, before or during a sale, to group together lots belonging to the same vendor, to split up and to withdraw any lot or lots at Whyte's absolute discretion and without giving any reason in any case.
- (c) Whyte's acts as agent only, and therefore shall not be liable for any default of the buyer or vendor.

### Clause 4

- (a) Each lot shall be at the buyer's risk from the fall of the hammer and shall be paid for in full before delivery and taken away at his expense within one day of the sale. The buyer will be responsible for all removal, storage and insurance charges in respect of any lot which has not been collected within 7 days of the date of sale.
- (b) If any buyer fails to pay in full for any lot within 7 days of the date of sale such lot may at any time thereafter at Whyte's discretion be put up for sale by auction again or sold privately; if upon such re-sale a lower price is obtained than was obtained on the first sale the buyer in default on the first sale shall make good the difference in price and the expenses of re-sale which shall become debt due from him.
- (c) Interest at 2 per cent per month and legal costs (if any) for recovery of monies due shall be payable by the buyer on any overdue account.

### Clause 5

- (a) All lots are made available for inspection before each sale and each buyer, by making a bid, acknowledges that he has satisfied himself as to the physical condition, age and catalogue description of each lot (including but not restricted to whether the lot is damaged or has been repaired or restored).
  - (b) All lots are sold with all faults and imperfections and errors of description and Whyte's and its employees, servants or agents shall not be responsible for any error of description or for the condition or authenticity of any lot, save for Clause 5 (c) below.
- Written or verbal condition reports may be supplied by Whyte's on request but these are merely statements of opinion, and any error or omission in these reports may not be taken as grounds for a cancellation of sale or refund of any part of the purchase price or the cost of any repairs to the lot or lots reported on.
- (c) If any lot sold at this auction is subsequently proved to be a "deliberate

forgery", Whyte's will cancel the sale and refund to the buyer the total amount paid by the buyer for the item, in the currency of the original sale. The onus of proving a lot to be a "deliberate forgery" is on the buyer. For these purposes, "deliberate forgery" means a lot that in Whyte's reasonable opinion is an imitation created to deceive as to authorship, where the correct description of such authorship is not reflected by the description in the catalogue (taking into account any Glossary of Terms). No lot shall be considered a deliberate forgery by reason only of any damage and/or restoration and/or modification work of any kind (including repainting or overpainting). This guarantee does not apply if (i) either the catalogue description was in accordance with the generally accepted opinions of scholars and experts at the date of the sale, or the catalogue description indicated that there was a conflict of such opinions; (ii) or the only method of establishing at the date of the sale that the item was a counterfeit would have been by means of processes not then generally available or accepted, unreasonably expensive or impractical to use; or likely to have caused damage to the lot or likely (in Whyte's reasonable opinion) to have caused loss of value to the lot; or (iii) there has been no material loss in value of the lot from its value had it been in accordance with its description. This guarantee is provided for a period of seven (7) years after the date of the relevant auction, is solely for the benefit of the buyer and may not be transferred to any third party. Whyte's has discretion to extend the guarantee for a longer period. To be able to claim under this Guarantee, the buyer must (i) notify Whyte's in writing within three (3) weeks of receiving any information that causes the buyer to question the authenticity or attribution of the item, specifying the lot number, date of the auction at which it was purchased and the reasons why it is thought to be a deliberate forgery; and (ii) return the item to Whyte's in the same condition as the date of the sale to the buyer and be able to transfer good title in the item, free from the third party claims arising after the date of the sale. Whyte's has discretion to waive any of the above requirements. Whyte's may require the buyer to obtain at the buyer's cost the reports of two independent and recognised experts in the field, mutually acceptable to Whyte's and the buyer. Whyte's shall not be bound by any reports produced by the buyer, and reserves the right to seek additional expert advice at its own expense. In the event Whyte's decides to rescind the sale under this Guarantee, it may refund the buyer the reasonable costs of up to two mutually approved independent expert reports.

- (d) Any lot listed as a "mixed lot, collection, range, portfolio etc." or stated to comprise or contain a collection or range of items which are not described shall be put up for sale not subject to rejection and shall be taken by the buyer with all (if any) faults, lack of genuineness and errors of description and numbers of items in the lot, and the buyer shall have no right to reject the lot; except that, notwithstanding the foregoing provisions of this sub-clause, where before a sale a person intending to bid at the sale gives notice in writing to, and satisfies Whyte's that any such lot contains any item or items not described in the sale catalogue and that person specifically describes that item or those items in that notice, then that item or those items shall, as between Whyte's and that person, be taken to form part of the description of the lot.

### Clause 6

The respective rights and obligations of the parties shall be governed and interpreted by Irish law, and the buyer hereby submits to the exclusive jurisdiction of the Irish Courts.

### SPECIAL CONDITIONS

- (a) The buyer shall pay Whyte's a commission at the rate of 20% (plus VAT under The Margin Scheme and which is not reclaimable). An extra charge of 3% of hammer price applies to on-line buyers.
  - (b) Whyte's or its employees, servants or agents may, on request organise packing and shipping of lots purchased or may order on the buyer's behalf third parties to pack or ship purchases. Under no circumstances does Whyte's accept any liability whatsoever for any loss or damage howsoever occasioned in the course of such service.
  - (c) The buyer authorises Whyte's to use any photographs or illustrations of any lot purchased for any or all purposes as Whyte's may require.
- The placing of a bid will be taken as full agreement to all the above conditions.

WHYTE & SONS AUCTIONEERS LIMITED  
38 Molesworth Street, Dublin D02 KF80

Licensed by the Property Services Regulatory Authority. Licence No: 001759



# **ART ONLINE**

## **Internet Auction**

### **3 April 2017**

#### **VIEWING:**

At our galleries:

Wednesday to Friday 29 to 31 March, 10am to 5pm;

Saturday 1 April 10am to 2pm;

Monday 3 April, 10am to 5pm.

#### **BIDDING**

This will be an Internet auction  
commencing at 6pm on 3 April 2017

live bidding at [www.whytes.ie](http://www.whytes.ie)

(please register at least 2 hours before sale commences).

You can leave absentee bids online

or you can email your bids to [bids@whytes.ie](mailto:bids@whytes.ie)

For help with bidding contact us at 01 676 2888

or email us at [info@whytes.ie](mailto:info@whytes.ie)

Whyte & Sons Auctioneers Ltd

38 Molesworth Street

Dublin D02 KF80

Ireland

+353 (0)1 676 2888

Licensed by the Property Services Authority, License No. 1759

**1**

**John Skelton (1923-2009)**

THE BALLET DANCER, 1988

oil on board

signed lower left; inscribed on reverse

6¼ x 10¼in. (15.88 x 26.04cm)

*Provenance:*

Family of the artist

Estimate €600-€800 (approx £522-£696)

[Click Here for Large Images & To Bid Lot 1](#)



**2**

**John Skelton (1923-2009)**

WILD FLOWERS, 1989

oil on board

signed lower centre; signed, titled, dated and with dedication on reverse

12 x 10in. (30.48 x 25.40cm)

*Provenance:*

Family of the artist

Estimate €600-€800 (approx £522-£696)

[Click Here for Large Images & To Bid Lot 2](#)





**3**

**John Skelton (1923-2009)**

THE WHITE DRESS, 1987

oil on board

signed lower right; signed, titled, dated and with  
dedication on reverse

5¾ x 5¾in. (14.61 x 14.61cm)

*Provenance:*

Family of the artist

Estimate €300-€500 (approx £261-£435)

[Click Here for Large Images & To Bid Lot 3](#)



**4**

**John Skelton (1923-2009)**

THE OLD ISLANDER, ARAN, 2000

oil on board

signed lower right; signed, titled, dated and with  
dedication on reverse

9¼ x 7¼in. (23½ x 18.42cm)

*Provenance:*

Family of the artist

Estimate €600-€800 (approx £522-£696)

[Click Here for Large Images & To Bid Lot 4](#)



**5**

**John Skelton (1923-2009)**

LANDSCAPE WITH COTTAGES, 1988

watercolour

signed and dated lower right

11¾ x 15¾in. (29.85 x 40.01cm)

*Provenance:*

Family of the artist

Estimate €300-€500 (approx £261-£435)

[Click Here for Large Images & To Bid Lot 5](#)



**6**

**Patrick Leonard HRHA (1918-2005)**

PORTRAIT OF A WOMAN

oil on board; (unframed)

signed on reverse

20 x 15½in. (50.80 x 39.37cm)

*Provenance:*

Collection of George and Maura McClelland

Estimate €400-€600 (approx £348-£522)

[Click Here for Large Images & To Bid Lot 6](#)





**7**

**Patrick Leonard HRHA (1918-2005)**

LOUGHSHINNY HARBOUR, COUNTY DUBLIN, 1952

watercolour; (unframed)

signed and dated lower right

12 x 14in. (30.48 x 35.56cm)

*Provenance:*

Collection of George and Maura McClelland

Estimate €300-€400 (approx £261-£348)

[Click Here for Large Images & To Bid Lot 7](#)



**8**

**Patrick Leonard HRHA (1918-2005)**

A STUDY

oil on board; (unframed)

signed and titled on reverse

24¼ x 20in. (61.60 x 50.80cm)

*Provenance:*

Collection of George and Maura McClelland

Estimate €300-€500 (approx £261-£435)

[Click Here for Large Images & To Bid Lot 8](#)



**9**

**Patrick Leonard HRHA (1918-2005)**

INTERIOR SCENES, 1952 (A PAIR)

coloured chalks; (2) (unframed)

signed and dated lower left

11 x 15in. (27.94 x 38.10cm)

*Provenance:*

Collection of George and Maura McClelland

Estimate €150-€200 (approx £130-£174)

[Click Here for Large Images & To Bid Lot 9](#)



**10**

**Patrick Leonard HRHA (1918-2005)**

SWIMMING SCENES (SET OF FIVE)

watercolour; (5) (unframed)

15 x 22in. (38.10 x 55.88cm)

*Provenance:*

Collection of George and Maura McClelland

Estimate €300-€500 (approx £261-£435)

[Click Here for Large Images & To Bid Lot 10](#)





**11**

**Patrick Leonard HRHA (1918-2005)**

THE STABLES, 1938, FOSSETT'S CIRCUS, RUSH, 1941  
and GARDEN SCENE, 1956 (A SET OF THREE)  
charcoal; (1) ink; (1) and pencil; (1) (unframed)  
signed, titled and dated  
11 x 19in. (27.94 x 48.26cm)

*Provenance:*

Collection of George and Maura McClelland

Estimate €200-€300 (approx £174-£261)

[Click Here for Large Images & To Bid Lot 11](#)



**12**

**Patrick Leonard HRHA (1918-2005)**

SKETCHES [EVERYDAY GLAMOUR] (SET OF THREE)  
pencil and watercolour; (1) pen and watercolour; (1)  
pen and wash; (1); (unframed)  
two signed with initials  
15 x 11in. (38.10 x 27.94cm)

*Provenance:*

Collection of George and Maura McClelland

Estimate €200-€300 (approx £174-£261)

[Click Here for Large Images & To Bid Lot 12](#)



**13**

**Patrick Leonard HRHA (1918-2005)**

SKETCHES [AT THE PUMP] (SET OF THREE)

pen;(1) watercolour and ink;(1) pen, inkwash and pastel;(1); (unframed)

two signed

15 x 11in. (38.10 x 27.94cm)

*Provenance:*

Collection of George and Maura McClelland

Estimate €200-€300 (approx £174-£261)

[Click Here for Large Images & To Bid Lot 13](#)



**14**

**Patrick Leonard HRHA (1918-2005)**

SKETCHES [BY THE PUMP] (SET OF THREE)

charcoal; (1) pastel; (2) (unframed)

all signed

15½ x 11in. (39.37 x 27.94cm)

*Provenance:*

Collection of George and Maura McClelland

Estimate €200-€300 (approx £174-£261)

[Click Here for Large Images & To Bid Lot 14](#)





**15**

**Patrick Leonard HRHA (1918-2005)**

SKETCHES [AT THE PUMP] (SET OF THREE)

ink and watercolour; (2) ink and wash; (1) (unframed)  
two signed

15 x 11in. (38.10 x 27.94cm)

*Provenance:*

Collection of George and Maura McClelland

Estimate €200-€300 (approx £174-£261)

[Click Here for Large Images & To Bid Lot 15](#)



**16**

**Patrick Leonard HRHA (1918-2005)**

SKETCHES [GLAMOUR] (SET OF THREE)

ink and watercolour; (1) pencil, charcoal and  
watercolour; (2); (unframed)

all signed with initials

15 x 11in. (38.10 x 27.94cm)

*Provenance:*

Collection of George and Maura McClelland

Estimate €200-€300 (approx £174-£261)

[Click Here for Large Images & To Bid Lot 16](#)



**17**

**Patrick Leonard HRHA (1918-2005)**

SKETCHES [AT THE PUMP] (SET OF THREE)

ink and wash; (2) pen and watercolour; (1);  
(unframed)

one signed

15 x 11in. (38.10 x 27.94cm)

*Provenance:*

Collection of George and Maura McClelland

Estimate €200-€300 (approx £174-£261)

[Click Here for Large Images & To Bid Lot 17](#)



**18**

**Patrick Leonard HRHA (1918-2005)**

SKETCHES [AT THE PUMP] (SET OF THREE)

ink and wash on paper; (unframed)

all signed; one comprising two scenes each signed

15 x 11in. (38.10 x 27.94cm)

*Provenance:*

Collection of George and Maura McClelland

Estimate €200-€300 (approx £174-£261)

[Click Here for Large Images & To Bid Lot 18](#)





**19**

**Patrick Leonard HRHA (1918-2005)**

SKETCHES [AT THE PUMP] (SET OF THREE)

pencil, inkwash and pastel; (2) pen, inkwash and pastel; (1); (unframed)

all signed; one signed and dated [1940]

14½ x 10½in. (36.83 x 26.67cm)

*Provenance:*

Collection of George and Maura McClelland

Estimate €200-€300 (approx £174-£261)

[Click Here for Large Images & To Bid Lot 19](#)



**20**

**Patrick Leonard HRHA (1918-2005)**

SKETCHES [GLAMOUR] (SET OF THREE)

pencil and inkwash; (1) pen and watercolour; (2); (unframed)

all signed

15 x 11in. (38.10 x 27.94cm)

*Provenance:*

Collection of George and Maura McClelland

Estimate €200-€300 (approx £174-£261)

[Click Here for Large Images & To Bid Lot 20](#)



**21**

**Patrick Leonard HRHA (1918-2005)**

SKETCHES [GLAMOUR] (SET OF THREE)

pastel;(1) pencil and pastel;(2); (unframed)

all signed with initials

15½ x 8in. (39.37 x 20.32cm)

*Provenance:*

Collection of George and Maura McClelland

Estimate €200-€300 (approx £174-£261)

[Click Here for Large Images & To Bid Lot 21](#)



**22**

**Patrick Leonard HRHA (1918-2005)**

SKETCHES [GLAMOUR] (SET OF THREE)

watercolour and pen;(1) ink and charcoal;(2);

(unframed)

two signed; largest

15 x 11in. (38.10 x 27.94cm)

*Provenance:*

Collection of George and Maura McClelland

Estimate €200-€300 (approx £174-£261)

[Click Here for Large Images & To Bid Lot 22](#)





**23**

**Patrick Leonard HRHA (1918-2005)**

SKETCHES (SET OF SIX)

pencil; (2) pen; (2) pastel; (1) watercolour and pencil;  
(1); (unframed)

mostly signed

15½ x 11¼in. (39.37 x 28.58cm)

*Provenance:*

Collection of George and Maura McClelland

Estimate €200-€300 (approx £174-£261)

[Click Here for Large Images & To Bid Lot 23](#)



**24**

**Patrick Leonard HRHA (1918-2005)**

SKETCHES (SET OF SEVEN)

pencil; (3) pen; (1) pastel; (3); (unframed)  
mostly signed

16 x 11in. (40.64 x 27.94cm)

*Provenance:*

Collection of George and Maura McClelland

Estimate €200-€300 (approx £174-£261)

[Click Here for Large Images & To Bid Lot 24](#)



**25**

**Patrick Leonard HRHA (1918-2005)**

SKETCHES [WOMEN & SAILBOATS] (SET OF THREE)

watercolour and pen;(2) ink and wash;(1);

(unframed)

one signed

15 x 11in. (38.10 x 27.94cm)

*Provenance:*

Collection of George and Maura McClelland

Estimate €200-€300 (approx £174-£261)

[Click Here for Large Images & To Bid Lot 25](#)



**26**

**Patrick Leonard HRHA (1918-2005)**

SKETCHES, FLOWERS AND SHELLS (SET OF FOUR)

charcoal; (3) conté; (1); (unframed)

all signed and dated

15 x 11in. (38.10 x 27.94cm)

*Provenance:*

Collection of George and Maura McClelland

Estimate €200-€300 (approx £174-£261)

[Click Here for Large Images & To Bid Lot 26](#)





**27**

**Attributed to Tom Nash (1891-1968)**

CHILDREN ON BRANCH

oil and pencil on board

with handwritten Redfern Gallery [London] label on reverse

10 x 13in. (25.40 x 33.02cm)

*Provenance:*

Collection of George and Maura McClelland

Estimate €300-€500 (approx £261-£435)

[Click Here for Large Images & To Bid Lot 27](#)



**28**

**George Dunne (20th/21st Century)**

STUDYING THE MENU

acrylic on board

signed lower right

19¼ x 21¼in. (48.90 x 53.98cm)

Estimate €300-€500 (approx £261-£435)

[Click Here for Large Images & To Bid Lot 28](#)



**29**

**William Mason (1906-2002)**

RED GABLES, BELFAST, 1970

oil on board

signed lower left; titled and dated on reverse

10 x 12½in. (25.40 x 31¾cm)

*Provenance:*

Collection of George and Maura McClelland

William Mason practised an Impressionist style of painting, finding inspiration in the likes of Sickert and Pissaro. Described by his dealer, George McClelland, as a "retiring man" whose paintings have a "timeless quality which is not dictated by fashion" (essay note from McClelland Galleries exhibition catalogue, March-April 1970), Mason exhibited with the Royal Academy London and with the McClelland Galleries in Belfast.

Estimate €300-€500 (approx £261-£435)

[Click Here for Large Images & To Bid Lot 29](#)



**30**

**William Mason (1906-2002)**

ST. ALBANS, HERTFORDSHIRE, ENGLAND

oil on board

titled on reverse

8½ x 10½in. (21.59 x 26.67cm)

*Provenance:*

Collection of George and Maura McClelland

Estimate €200-€300 (approx £174-£261)

[Click Here for Large Images & To Bid Lot 30](#)





**31**

**William Mason (1906-2002)**

PUB SCENE

oil on board

signed lower left

10½ x 9¼in. (26.67 x 23½cm)

*Provenance:*

Collection of George and Maura McClelland

Estimate €200-€300 (approx £174-£261)

[Click Here for Large Images & To Bid Lot 31](#)



**32**

**William Mason (1906-2002)**

TWO SCENES FROM KELLY'S CELLERS, BELFAST, 1970

and SCENE OF MEN PLAYING CARDS (SET OF THREE)

pastel; (3); (unframed)

all signed

12½ x 8¾in. (31¾ x 22.23cm)

*Provenance:*

Collection of George and Maura McClelland

Estimate €200-€300 (approx £174-£261)

[Click Here for Large Images & To Bid Lot 32](#)



**33**

**William Mason (1906-2002)**

STREET SCENE

pastel; (unframed)

signed lower right

11¼ x 13½in. (28.58 x 34.29cm)

*Provenance:*

Collection of George and Maura McClelland

Estimate €100-€150 (approx £87-£130)

[Click Here for Large Images & To Bid Lot 33](#)



**34**

**William Mason (1906-2002)**

FIGURES AT DUSK

oil on board; (unframed)

signed lower left

12 x 9½in. (30.48 x 24.13cm)

*Provenance:*

Collection of George and Maura McClelland

Estimate €200-€300 (approx £174-£261)

[Click Here for Large Images & To Bid Lot 34](#)





**35**

**William Mason (1906-2002)**

STREET SCENE WITH COUPLE

pastel; (unframed)

signed lower left

11½ x 7in. (29.21 x 17.78cm)

*Provenance:*

Collection of George and Maura McClelland

Estimate €100-€150 (approx £87-£130)

[Click Here for Large Images & To Bid Lot 35](#)



**36**

**William Mason (1906-2002)**

BOY WITH DOG, BELFAST, 1969

oil on board; (unframed)

signed lower right; signed, titled and dated on reverse

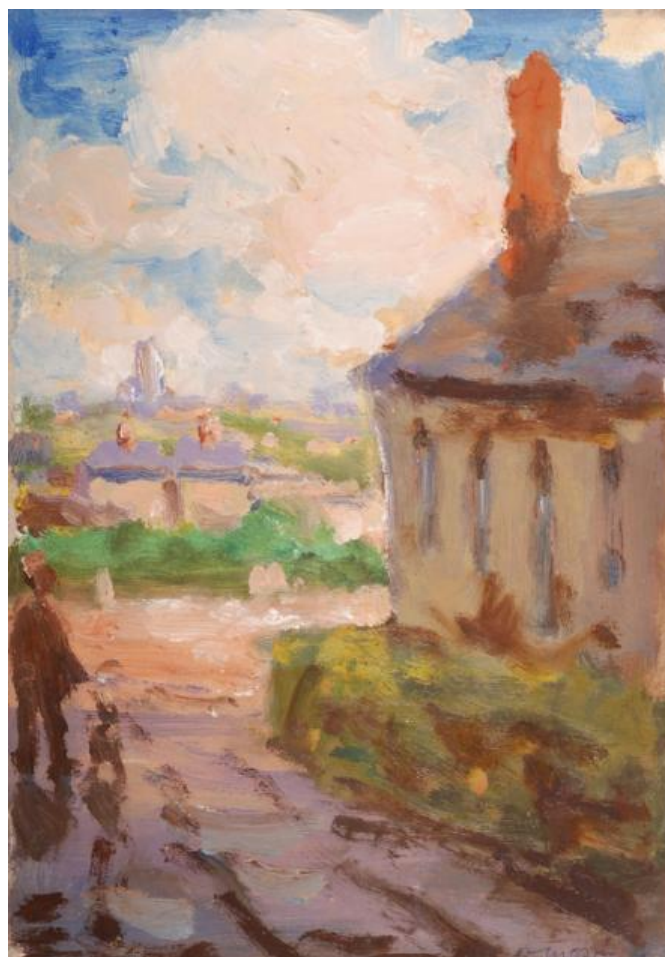
13½ x 9¼in. (34.29 x 23½cm)

*Provenance:*

Collection of George and Maura McClelland

Estimate €150-€200 (approx £130-£174)

[Click Here for Large Images & To Bid Lot 36](#)



**37**

**William Mason (1906-2002)**

TWO NIGHT-TIME STREET SCENES and PARK SCENE  
(SET OF THREE)

pastel; (3); (unframed)

signed lower left and lower right

12 x 10in. (30.48 x 25.40cm)

*Provenance:*

Collection of George and Maura McClelland

Dimension of largest work given

Estimate €200-€300 (approx £174-£261)

[Click Here for Large Images & To Bid Lot 37](#)



**38**

**William Mason (1906-2002)**

FLOWERS

oil on board

signed lower left

11 x 7¾in. (27.94 x 19.69cm)

*Provenance:*

Collection of George and Maura McClelland

Estimate €250-€350 (approx £217-£304)

[Click Here for Large Images & To Bid Lot 38](#)





**39**

**William Conor OBE RHA RUA ROI (1881-1968)**

MILL WORKERS, BELFAST, 1906

crayon

signed lower left; titled and dated on reverse

7 x 8¾in. (17.78 x 22.23cm)

*Provenance:*

Collection of George and Maura McClelland

Estimate €1000-€1500 (approx £870-£1305)

[Click Here for Large Images & To Bid Lot 39](#)



**40**

**William Conor OBE RHA RUA ROI (1881-1968)**

FULL HOUSE, 1910

crayon and ink

signed centre right; titled and dated upper right

7 x 6¾in. (17.78 x 17.15cm)

*Provenance:*

Collection of George and Maura McClelland

Estimate €1000-€1500 (approx £870-£1305)

[Click Here for Large Images & To Bid Lot 40](#)





**41**

**William Conor OBE RHA RUA ROI (1881-1968)**

GOVERNOR'S GUARD

crayon

signed lower right

18¾ x 9½in. (47.63 x 24.13cm)

*Provenance:*

Collection of George and Maura McClelland

The picture depicts the theatrically uniformed guard at the Governor of Northern Ireland's residence, Hillsborough Castle, County Down (1922-1973).

Estimate €1000-€1500 (approx £870-£1305)

[Click Here for Large Images & To Bid Lot 41](#)



**42**

**William Conor OBE RHA RUA ROI (1881-1968)**

WOODLAND SCENE

watercolour; (unframed)

signed lower right; signed and inscribed [Bought 1969] on reverse

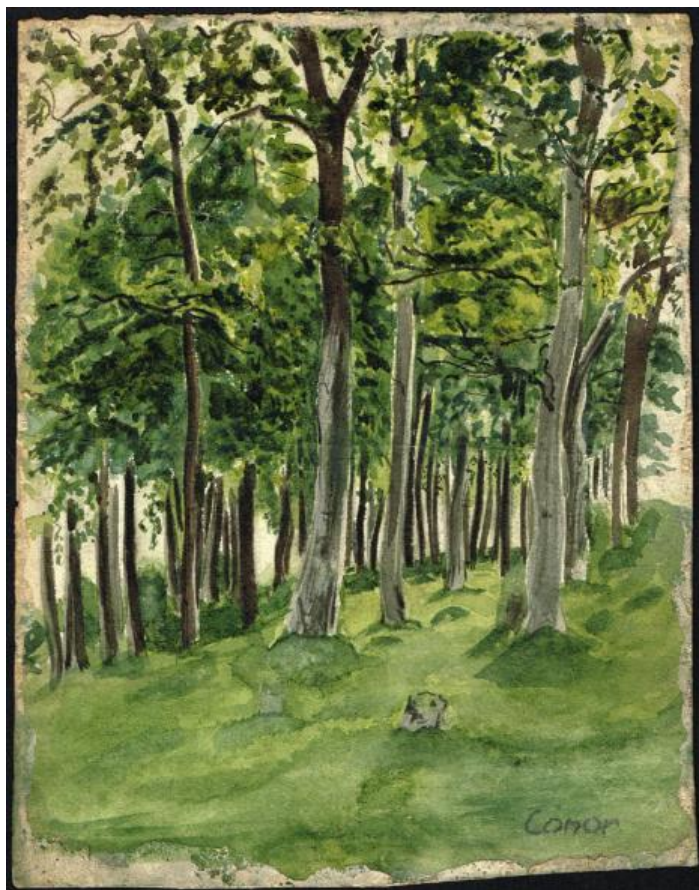
8 x 6in. (20.32 x 15.24cm)

*Provenance:*

Collection of George and Maura McClelland

Estimate €400-€600 (approx £348-£522)

[Click Here for Large Images & To Bid Lot 42](#)



**43**

**William Conor OBE RHA RUA ROI (1881-1968)**

WATCH THIS

ink; (unframed)

signed lower right

9¼ x 9½in. (23½ x 24.13cm)

*Provenance:*

Collection of George and Maura McClelland

Estimate €400-€600 (approx £348-£522)

[Click Here for Large Images & To Bid Lot 43](#)



**44**

**Markey Robinson (1918-1999)**

THE REED POOL, FLORENCE

gouache

signed lower left; with Oriel Gallery label on reverse

9¼ x 15¾in. (23½ x 40.01cm)

*Provenance:*

Oriel Gallery, Dublin;

Private collection

Estimate €1000-€1500 (approx £870-£1305)

[Click Here for Large Images & To Bid Lot 44](#)





**45**

**Markey Robinson (1918-1999)**

COASTAL SCENE WITH FIGURES AND SAILBOATS

gouache; (unframed)

signed lower right

9½ x 13½in. (24.13 x 34.29cm)

*Provenance:*

Collection of George and Maura McClelland

Estimate €400-€600 (approx £348-£522)

[Click Here for Large Images & To Bid Lot 45](#)



**46**

**Markey Robinson (1918-1999)**

CONTINENTAL SCENE

gouache and pencil; (unframed)

signed lower right; indistinctly signed lower left

5 x 7in. (12.70 x 17.78cm)

*Provenance:*

Collection of George and Maura McClelland

Estimate €300-€500 (approx £261-£435)

[Click Here for Large Images & To Bid Lot 46](#)



**47**

**Markey Robinson (1918-1999)**

COASTAL SCENE WITH FIGURES

gouache; (unframed)

signed lower left

6½ x 11½in. (16.51 x 29.21cm)

*Provenance:*

Collection of George and Maura McClelland

Estimate €400-€600 (approx £348-£522)

[Click Here for Large Images & To Bid Lot 47](#)



**48**

**Markey Robinson (1918-1999)**

SKETCH BY THE SEA

gouache and crayon; (unframed)

signed lower right; signed and inscribed with title  
on reverse

6 x 17¾in. (15.24 x 45.09cm)

*Provenance:*

Collection of George and Maura McClelland

Estimate €300-€500 (approx £261-£435)

[Click Here for Large Images & To Bid Lot 48](#)



**49**

**Markey Robinson (1918-1999)**

FROST, MORNING

oil on board; (unframed)

signed and titled on reverse

3½ x 5¼in. (8.89 x 13.34cm)

*Provenance:*

Collection of George and Maura McClelland

Estimate €300-€400 (approx £261-£348)

[Click Here for Large Images & To Bid Lot 49](#)



**50**

**Markey Robinson (1918-1999)**

FISHING VILLAGE

oil on panel; (unframed)

signed and titled on reverse

6½ x 15in. (16.51 x 38.10cm)

*Provenance:*

Collection of George and Maura McClelland

Estimate €600-€800 (approx £522-£696)

[Click Here for Large Images & To Bid Lot 50](#)





**51**

**Markey Robinson (1918-1999)**

CITY SCENE

oil on board; (unframed)

signed lower left

7 x 12¾in. (17.78 x 32.39cm)

*Provenance:*

Collection of George and Maura McClelland

Estimate €300-€500 (approx £261-£435)

[Click Here for Large Images & To Bid Lot 51](#)



**52**

**Markey Robinson (1918-1999)**

BOTTLE WITH FLOWERS

oil on panel; (unframed)

signed lower left; indistinctly titled on reverse

17 x 4in. (43.18 x 10.16cm)

*Provenance:*

Collection of George and Maura McClelland

Estimate €400-€600 (approx £348-£522)

[Click Here for Large Images & To Bid Lot 52](#)



**53**

**Markey Robinson (1918-1999)**

JUG WITH FLOWERS

oil on board; (unframed)

signed lower left; inscribed with title on reverse

18 x 5¾in. (45.72 x 14.61cm)

*Provenance:*

Collection of George and Maura McClelland

Estimate €400-€600 (approx £348-£522)

[Click Here for Large Images & To Bid Lot 53](#)



**54**

**Markey Robinson (1918-1999)**

SAILBOATS

oil on board; (unframed)

signed lower left; signed and titled on reverse

8½ x 18½in. (21.59 x 46.99cm)

*Provenance:*

Collection of George and Maura McClelland

Estimate €400-€600 (approx £348-£522)

[Click Here for Large Images & To Bid Lot 54](#)



**55**

**Markey Robinson (1918-1999)**

FARM, WINTER

oil on board; (unframed)

signed and titled on reverse

2¾ x 5¾in. (6.99 x 14.61cm)

*Provenance:*

Collection of George and Maura McClelland

Estimate €300-€400 (approx £261-£348)

[Click Here for Large Images & To Bid Lot 55](#)



**56**

**Markey Robinson (1918-1999)**

DONEGAL SCENE

oil on board; (unframed)

signed and titled on reverse

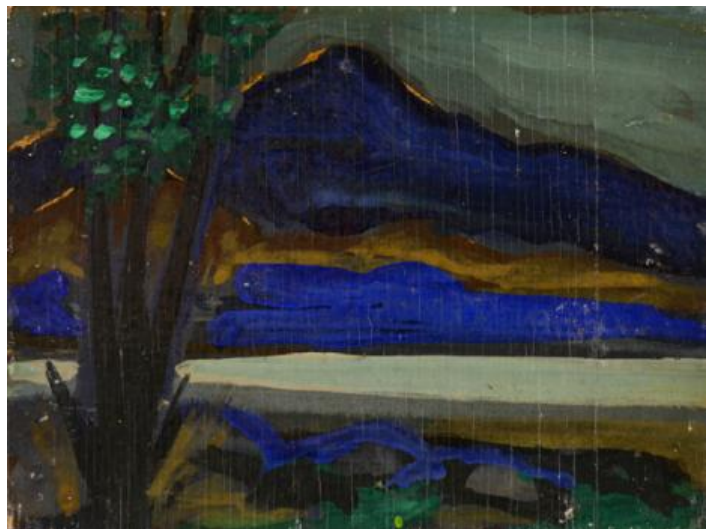
5 x 3¾in. (12.70 x 9.53cm)

*Provenance:*

Collection of George and Maura McClelland

Estimate €300-€400 (approx £261-£348)

[Click Here for Large Images & To Bid Lot 56](#)





**57**

**Markey Robinson (1918-1999)**

UNTITLED (TWO FIGURES I)

oil on board; (unframed)

signed with initials lower right

6¼ x 4 x 4in. (15.88 x 10.16 x 10.16cm)

*Provenance:*

Collection of George and Maura McClelland

Estimate €300-€400 (approx £261-£348)

[Click Here for Large Images & To Bid Lot 57](#)



**58**

**Markey Robinson (1918-1999)**

UNTITLED (THREE FIGURES I)

oil on board; (unframed)

signed with initials lower right

6 x 4¼in. (15.24 x 10.80cm)

*Provenance:*

Collection of George and Maura McClelland

Estimate €300-€400 (approx £261-£348)

[Click Here for Large Images & To Bid Lot 58](#)



**59**

**Markey Robinson (1918-1999)**

UNTITLED (TWO FIGURES II)

oil on board; (unframed)

signed with initials lower right

5½ x 4¼in. (13.97 x 10.80cm)

*Provenance:*

Collection of George and Maura McClelland

Estimate €300-€400 (approx £261-£348)

[Click Here for Large Images & To Bid Lot 59](#)



**60**

**Markey Robinson (1918-1999)**

ICON - JESUS HEALS THE SICK

acrylic on printed paper on panel; (unframed)

signed with initial on reverse

11½ x 8½in. (29.21 x 21.59cm)

*Provenance:*

Collection of George and Maura McClelland

Estimate €200-€300 (approx £174-£261)

[Click Here for Large Images & To Bid Lot 60](#)





**61**

**Markey Robinson (1918-1999)**

ICON - MADONNA AND CHILD

acrylic on printed paper on panel; (unframed)  
signed with initials on reverse

10½ x 7in. (26.67 x 17.78cm)

*Provenance:*

Collection of George and Maura McClelland

Estimate €200-€300 (approx £174-£261)

[Click Here for Large Images & To Bid Lot 61](#)



**62**

**Markey Robinson (1918-1999)**

ICON - THE VIRGIN MARY

acrylic on printed paper on panel; (unframed)  
signed with initials on reverse

11 x 7½in. (27.94 x 19.05cm)

*Provenance:*

Collection of George and Maura McClelland

Estimate €200-€300 (approx £174-£261)

[Click Here for Large Images & To Bid Lot 62](#)





**63**

**Markey Robinson (1918-1999)**

ICON - THE HOLY FAMILY

acrylic on printed paper on panel; (unframed)

signed with initials on reverse

8¾ x 6in. (22.23 x 15.24cm)

*Provenance:*

Collection of George and Maura McClelland

Estimate €150-€200 (approx £130-£174)

[Click Here for Large Images & To Bid Lot 63](#)



**64**

**Markey Robinson (1918-1999)**

SKETCHES (SET OF FIVE)

gouache and ink; (5); (unframed)

all signed

5¾ x 8in. (14.61 x 20.32cm)

*Provenance:*

Collection of George and Maura McClelland

Dimensions of largest work given

Estimate €300-€500 (approx £261-£435)

[Click Here for Large Images & To Bid Lot 64](#)



**65**

**Markey Robinson (1918-1999)**

SKETCHES (SET OF FIVE)

gouache and pen on paper mounted on board; (5);  
(unframed)

all signed

6 x 8in. (15.24 x 20.32cm)

*Provenance:*

Collection of George and Maura McClelland

Dimensions of largest work given

Estimate €300-€500 (approx £261-£435)

[Click Here for Large Images & To Bid Lot 65](#)



**66**

**Markey Robinson (1918-1999)**

SKETCHES (SET OF FIVE)

gouache and pen on paper mounted on board; (5);  
(unframed)

all signed

6 x 8in. (15.24 x 20.32cm)

*Provenance:*

Collection of George and Maura McClelland

Dimensions of largest work given

Estimate €300-€500 (approx £261-£435)

[Click Here for Large Images & To Bid Lot 66](#)



**67**

**Markey Robinson (1918-1999)**

FEMALE FIGURE

wood carving; (unique)

33½ x 4 x 1¼in. (85.09 x 10.16 x 3.18cm)

*Provenance:*

Collection of George and Maura McClelland

Estimate €500-€700 (approx £435-£609)

[Click Here for Large Images & To Bid Lot 67](#)



**68**

**Markey Robinson (1918-1999)**

MADONNA AND CHILD

wood carving; (unique)

signed on right edge

11½ x 5in. (29.21 x 12.70cm)

*Provenance:*

Collection of George and Maura McClelland

Estimate €300-€500 (approx £261-£435)

[Click Here for Large Images & To Bid Lot 68](#)





**69**

**Brian Ferran HRUA HRHA (b.1940)**

SINGERS

oil on board

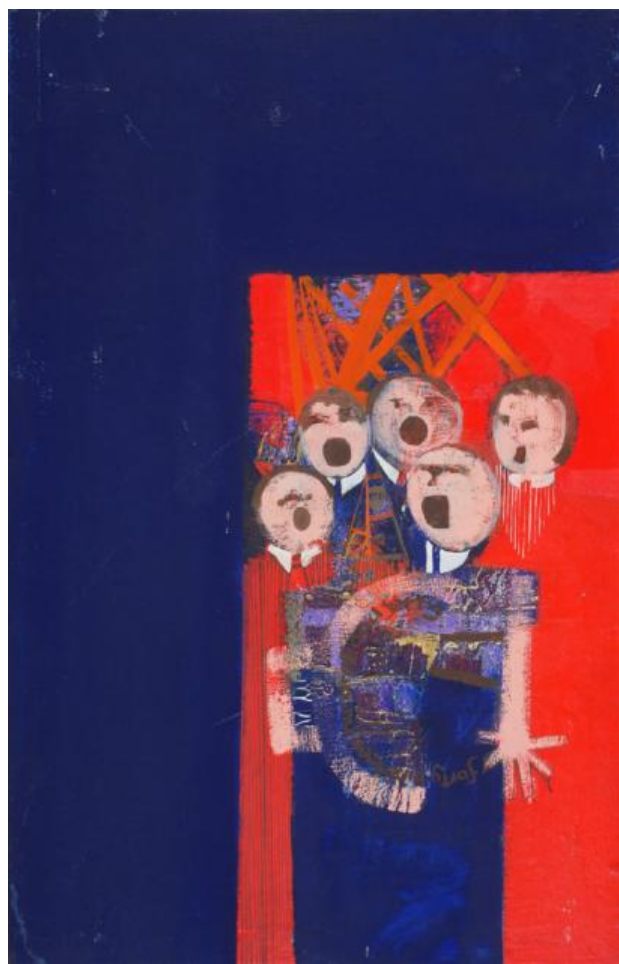
19 x 12½in. (48.26 x 31¾cm)

*Provenance:*

Collection of George and Maura McClelland

Estimate €300-€500 (approx £261-£435)

[Click Here for Large Images & To Bid Lot 69](#)



**70**

**Brian Bourke HRHA (b.1936)**

POLLING, 1966

mixed media on paper

signed, titled and dated lower right

31½ x 22in. (80.01 x 55.88cm)

Estimate €600-€800 (approx £522-£696)

[Click Here for Large Images & To Bid Lot 70](#)



**71**

**Brian Bourke HRHA (b.1936)**

DUBLIN, 1967

mixed media on paper

signed, titled and dated [Oct 67] lower right

26½ x 18½in. (67.31 x 46.99cm)

Estimate €500-€700 (approx £435-£609)

[Click Here for Large Images & To Bid Lot 71](#)





**72**

**Bernadette Madden (b.1948)**

PRE-CHRISTIAN INUIT GRAVE

screenprint; (no. 1 from an edition of 7)

signed lower right; titled and numbered lower left;

titled and with artist's address on reverse

24¾ x 16½in. (62.87 x 41.91cm)

Estimate €300-€500 (approx £261-£435)

[Click Here for Large Images & To Bid Lot 72](#)



**73**

**Madani (Iranian, 20th century)**

UNTITLED

oil on board

signed lower right

20 x 17in. (50.80 x 43.18cm)

*Provenance:*

With Certificate of Authenticity issued by Fine Art Wholesalers Inc., Pompana Beach, Florida.

Estimate €150-€200 (approx £130-£174)

[Click Here for Large Images & To Bid Lot 73](#)





**74**

**George Galway MacCann ARCA (1909-1967)**

**CONSTRUCTION ON A KITCHEN DOOR**

oil and collage elements on panel

signed lower right; inscribed on reverse

16½ x 23in. (41.91 x 58.42cm)

*Provenance:*

Collection of George and Maura McClelland

George Galway MacCann, was a sculptor, muralist and stage designer born in Belfast to David, a monumental sculptor and his wife Elizabeth. He studied at the Royal Belfast Academical Institution from 1920-26 and at the Belfast school of Art under Seamus Stoupe 1926-29, where he met fellow art student and his future wife Mercy Hunter. In 1929 he won a major scholarship to the Royal College of Art, London. He was awarded a prize for sculpture in 1932, on the recommendation of his lecturer, Henry Moore. On his return to Belfast MacCann exhibited at a show of sculpture and painting with William Coonor, Margaret Yeames and Joy McKean in November 1933. The following



year MacCann and Yeames joined with members of the recently formed Northern Ireland Guild of Artists, including Elisabeth Clements, Colin Middleton, John Luke and Romeo Toogood, and established the Ulster Unit. At the Unit's only exhibition, in November 1934, MacCann showed abstracted paintings and two stone sculptures that illustrated the influence of his teacher Henry Moore. MacCann received his first public commission, a carved panel for above the entrance of Avoniel Primary School, in 1935. While living in County Armagh he worked as an art teacher at the Royal School Armagh and Portadown College, and from 1938-39 he was head of sculpture at the Belfast School of Art. During WWII MacCann served in Burma as a captain in the Royal Inniskilling Fusiliers. During the 1940s, MacCann was depicted in his Inniskilling uniform by Sydney Smith - a painting now in the collection of the Armagh County Museum. From 1946 MacCann taught at Sullivan Upper School, Holywood. In the 1950s MacCann garnered several commissions and was represented at CEMA's exhibition of sculpture at the Belfast Museum and Art Gallery in 1953 where his work was shown alongside Henry Moore, Lynn Chadwick, Barbara Hepworth, Jacob Epstein and Uli Nimpf. MacCann and Mercy Hunter were well known and highly regarded in Belfast's art and literary circles. They collaborated on costume designs for the Patricia Mulholland Irish Ballet and some of these designs can be found in the Grand Opera House, Belfast. A solo show of his work was held at the New Gallery, Belfast in 1963 and he also exhibited at the IEA in Dublin. In 1964 he was elected associate of the Royal Ulster Academy. A memorial exhibition was arranged by the Arts Council of Northern Ireland at Queen's University in 1968. For further reading see Snoddy, p.364-365

Estimate €400-€600 (approx £348-£522)

[Click Here for Large Images & To Bid Lot 74](#)

**75**

**Eileen Costelloe (1911-1976)**

LANDSCAPE, 1972

gouache

signed lower right; with David Hendriks Gallery label on reverse

20½ x 13½in. (52.07 x 34.29cm)

*Provenance:*

David Hendriks Gallery, Dublin;

Private collection

Estimate €300-€400 (approx £261-£348)

[Click Here for Large Images & To Bid Lot 75](#)



**76**

**Tony O'Malley HRHA (1913-2003)**

SMALL PANEL PAINTING I, 1975 and SMALL PANEL PAINTING II, 1981  
(A PAIR)

oil on panel; (2)

both signed, titled, dated and with artist's archive number on reverse

18 x 1¾in. (45.72 x 4.45cm)

*Provenance:*

Collection of George and Maura McClelland

Estimate €2000-€3000 (approx £1740-£2610)

[Click Here for Large Images & To Bid Lot 76](#)





**77**

**Tony O'Malley HRHA (1913-2003)**

UNTITLED (STILL LIFE), 1964

gouache and pastel on paper

signed and dated lower right

10 x 14in. (25.40 x 35.56cm)

*Provenance:*

Collection of George and Maura McClelland

Estimate €1000-€1500 (approx £870-£1305)

[Click Here for Large Images & To Bid Lot 77](#)



**78**

**Tony O'Malley HRHA (1913-2003)**

UNTITLED [CROWS], MARCH 1973

gouache on paper

signed with initial and dated lower right

7¾ x 11¼in. (19.69 x 28.58cm)

*Provenance:*

Collection of George and Maura McClelland

Estimate €800-€1200 (approx £696-£1044)

[Click Here for Large Images & To Bid Lot 78](#)



**79**

**Tony O'Malley HRHA (1913-2003)**

APPLES BENEATH THE TREES, PANEX, SWITZERLAND, 1973

gouache and pen on paper

signed and dated [9/73] lower right and inscribed with title lower left; signed and inscribed with title, date and St Ives studio address on reverse  
7¾ x 10¼in. (19.69 x 26.04cm)

*Provenance:*

Collection of George and Maura McClelland

Estimate €800-€1200 (approx £696-£1044)

[Click Here for Large Images & To Bid Lot 79](#)



**80**

**Tony O'Malley HRHA (1913-2003)**

UNTITLED (SUNBATHER) 1974

gouache and pastel on paper

signed with initials and dated [7/74] lower right  
7 x 10in. (17.78 x 25.40cm)

*Provenance:*

Collection of George and Maura McClelland

Estimate €800-€1200 (approx £696-£1044)

[Click Here for Large Images & To Bid Lot 80](#)



**81**

**Tony O'Malley HRHA (1913-2003)**

UNTITLED [BROWN, WHITE & BLUE], MARCH 1977

oil on board

signed with initials and dated lower right

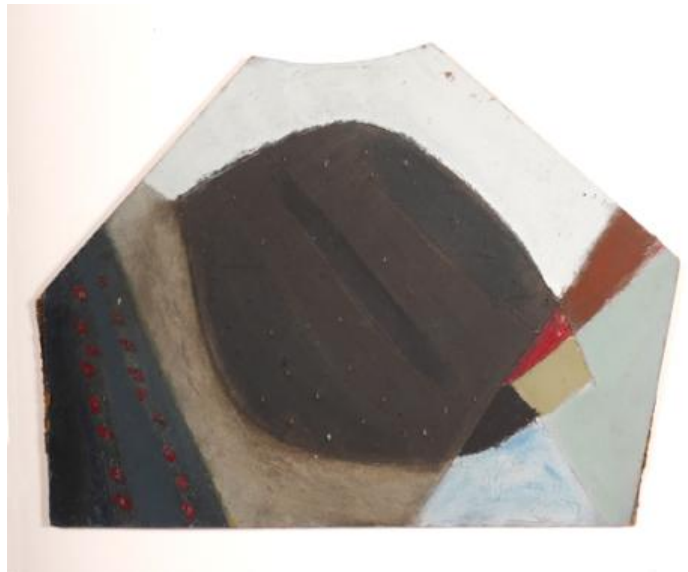
10½ x 14in. (26.67 x 35.56cm)

*Provenance:*

Collection of George and Maura McClelland

Estimate €800-€1200 (approx £696-£1044)

[Click Here for Large Images & To Bid Lot 81](#)



**82**

**Tony O'Malley HRHA (1913-2003)**

ICARUS, 1961

gouache on panel

signed and titled on base; signed with initials and inscribed with title and date on reverse

3½ x 17in. (8.89 x 43.18cm)

*Provenance:*

Collection of George and Maura McClelland

Estimate €600-€800 (approx £522-£696)

[Click Here for Large Images & To Bid Lot 82](#)



**83**

**Tony O'Malley HRHA (1913-2003)**

UNTITLED [BROWN, BLUE AND RED], 1977

oil on board

signed with initials lower left and lower centre; dated [7/77] lower left and [4/77] lower centre

3 x 11½in. (7.62 x 29.21cm)

*Provenance:*

Collection of George and Maura McClelland

Estimate €400-€600 (approx £348-£522)

[Click Here for Large Images & To Bid Lot 83](#)



**84**

**Tony O'Malley HRHA (1913-2003)**

UNTITLED [BLUE, WHITE & PINK] APRIL 1977

oil on board

signed with initials lower right and dated lower centre

3¼ x 9¼in. (8.26 x 23½cm)

*Provenance:*

Collection of George and Maura McClelland

Estimate €300-€500 (approx £261-£435)

[Click Here for Large Images & To Bid Lot 84](#)



**85**

**Tony O'Malley HRHA (1913-2003)**

ST MARTINS, 1973

gouache on board

signed lower left and dated lower right; signed

[Antoine Ó Máille] and inscribed with title and date on reverse

5½ x 8in. (13.97 x 20.32cm)

*Provenance:*

Collection of George and Maura McClelland

Estimate €300-€500 (approx £261-£435)

[Click Here for Large Images & To Bid Lot 85](#)



**86**

**Tony O'Malley HRHA (1913-2003)**

JERPOINT ABBEY

gouache on paper

signed with initials lower left; inscribed with title

lower centre; dated [9/3/74] lower right

7½ x 11in. (19.05 x 27.94cm)

*Provenance:*

Collection of George and Maura McClelland

Estimate €600-€800 (approx £522-£696)

[Click Here for Large Images & To Bid Lot 86](#)



**87**

**Jane O'Malley (b.1944)**

MARCH LANDSCAPE I - ST MARTINS, 1979 and  
TOWARDS TRESKO II - ST MARTINS, 1979 and  
POTATOE DIGGER - ST. MARTINS, 1977 (SET OF  
THREE)

oil on board

signed lower right and dated lower left; signed,  
dated [Oct, 1977], numbered [53] and inscribed with  
title and studio address on reverse

4 x 6in. (10.16 x 15.24cm)

*Provenance:*

Collection of George and Maura McClelland

dimensions of largest given

Estimate €300-€500 (approx £261-£435)

[Click Here for Large Images & To Bid Lot 87](#)



**88**

**Basil Blackshaw HRHA RUA (1932-2016)**

GREEN HOUSE

oil on paper

5¾ x 7in. (14.61 x 17.78cm)

*Provenance:*

Acquired directly from the artist by the present  
owner

This lot is accompanied by a letter of provenance.

Estimate €500-€700 (approx £435-£609)

[Click Here for Large Images & To Bid Lot 88](#)





**89**

**Basil Blackshaw HRHA RUA (1932-2016)**

**TWO TREES**

oil on paper

7½ x 5½in. (19.05 x 13.97cm)

*Provenance:*

Acquired directly from the artist by the present owner

This lot is accompanied by a letter of provenance.

Estimate €300-€500 (approx £261-£435)

[Click Here for Large Images & To Bid Lot 89](#)



**90**

**Basil Blackshaw HRHA RUA (1932-2016)**

**MAN ON BICYCLE**

oil and charcoal on paper

7¾ x 4¾in. (19.69 x 12.07cm)

*Provenance:*

Acquired directly from the artist by the present owner

This lot is accompanied by a letter of provenance.

Estimate €300-€500 (approx £261-£435)

[Click Here for Large Images & To Bid Lot 90](#)



**91**

**Basil Blackshaw HRHA RUA (1932-2016)**

STILL LIFE WITH POTTED PLANT

oil on paper

7¾ x 6¾in. (19.69 x 17.15cm)

*Provenance:*

Acquired directly from the artist by the present owner

This lot is accompanied by a letter of provenance.

Estimate €300-€500 (approx £261-£435)

[Click Here for Large Images & To Bid Lot 91](#)



**92**

**Basil Blackshaw HRHA RUA (1932-2016)**

YELLOW HOUSE

oil on paper

5¾ x 8in. (14.61 x 20.32cm)

*Provenance:*

Acquired directly from the artist by the present owner

This lot is accompanied by a letter of provenance.

Estimate €300-€500 (approx £261-£435)

[Click Here for Large Images & To Bid Lot 92](#)



**93**

**Arthur Armstrong RHA (1924-1996)**

BLUE AND YELLOW LANDSCAPE

collage

signed lower left; with typed David Hendriks Gallery  
label on reverse

9 x 13in. (22.86 x 33.02cm)

*Provenance:*

David Hendriks Gallery, Dublin;

Collection of George and Maura McClelland

Estimate €400-€600 (approx £348-£522)

[Click Here for Large Images & To Bid Lot 93](#)



**94**

**Stephen Lawlor (b.1958)**

RED II, 2005

oil on canvas board

signed on reverse; signed, titled and dated on label  
on reverse

4½ x 6½in. (11.43 x 16.51cm)

Estimate €500-€700 (approx £435-£609)

[Click Here for Large Images & To Bid Lot 94](#)





**95**

**Ross Wilson ARUA (b.1957)**

THE LOVE HORSE

oil and collage elements on panel

inscribed on reverse

6¼ x 11¾in. (15.88 x 29.85cm)

Estimate €300-€500 (approx £261-£435)

[Click Here for Large Images & To Bid Lot 95](#)



**96**

**William Crozier HRHA (1930-2011)**

TWO TREES, 2007

Intaglio print from photopolymer plates; (no. 27  
from an edition of 40)

signed, titled and numbered in the lower margin  
11½ x 14½in. (29.21 x 36.83cm)

Estimate €600-€800 (approx £522-£696)

[Click Here for Large Images & To Bid Lot 96](#)



**97**

**Patrick Hickey HRHA (1927-1998)**

THE FIRST DAY OF CHRISTMAS, A PARTRIDGE IN A  
PEAR TREE

print; (no. 3 from an edition of 30)

signed, titled and numbered

Estimate €300-€400 (approx £261-£348)

[Click Here for Large Images & To Bid Lot 97](#)



**98**

**Richard Kingston RHA (1922-2003)**

POPPIES IN THE WIND, 1995

monoprint; (unique)

signed lower right; signed and titled on reverse

10¾ x 14¾in. (27.31 x 37.47cm)

Estimate €500-€700 (approx £435-£609)

[Click Here for Large Images & To Bid Lot 98](#)



**99**

**Erik van der Grijn (b. 1941)**

POPPIES III, 1996

oil on canvas

signed and dated lower right

32 x 32in. (81.28 x 81.28cm)

ABSTRACT

Estimate €1500-€2000 (approx £1305-£1740)

[Click Here for Large Images & To Bid Lot 99](#)



**100**

**John Cronin (b.1966)**

UNTITLED

oil and gouache on canvas

signed lower left

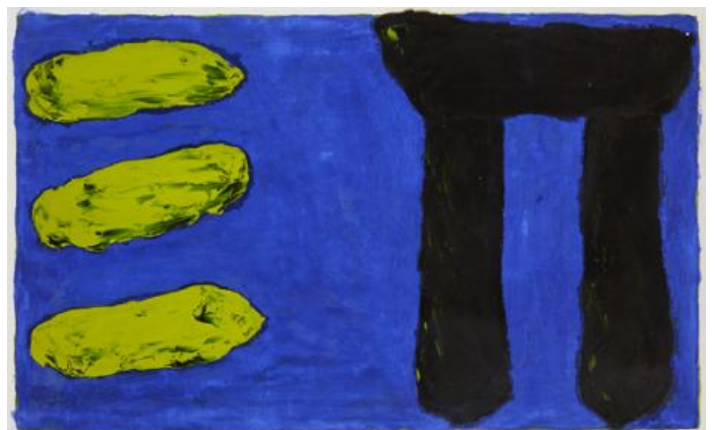
25 x 37¾in. (63½ x 95.89cm)

Born in Dublin in 1966, and graduating from the National College of Art and Design in 1988, John Cronin has been exhibiting since the late 1980s. In the intervening years his work has been seen in Europe, U.S. and Asia. Most recently it has been exhibited alongside that of Cecily Browne, Ian Davenport, Mark Francis, Howard Hodgkin, Callum Inness, Jason Martin and Seán Scully in the major review of Abstract painting in Britain and Ireland - Painting in the Noughties.

John Cronin is represented by The Green On Red Gallery, Dublin.

Estimate €600-€800 (approx £522-£696)

[Click Here for Large Images & To Bid Lot 100](#)





**101**

**Christine Bowen (20th/21st Century)**

AT SWIM, TWO FISH

pastel

signed lower right; titled on reverse

13¼ x 9¼in. (33.66 x 23½cm)

Christine Bowen lives and practices from her gallery in Kenmare, Co. Kerry, Ireland. Based in Dublin she worked in interior design until 1987 when she then commenced a fine art course culminating in a B.A Hons Art degree from Belfast College in 1994. Christine's work is influenced by history, archaeology and poetry, in particular W.B Yeats, Lorca and Cohen. Flora and fauna are also signatures found in her work.

Estimate €300-€500 (approx £261-£435)

[Click Here for Large Images & To Bid Lot 101](#)



**102**

**Manus Walsh (b.1940)**

LANDSCAPE

oil and glaze on ceramic tile

signed with monogram lower left

9 x 9½in. (22.86 x 24.13cm)

*Provenance:*

Belharbour Gallery, County Clare, 2006;

Private collection

Having trained as a stained glass artist in Dublin, Manus Walsh turned to painting and particularly collage in the 1960s and 1970s as a way of interpreting the strange forms of the Burren, where he still lives. He has exhibited at the Oireachtas, the RHA, and the Cork Arts Society. Manus has a bi-annual exhibition of his work, which he paints in Spain and the Burren. His works are primarily in oil / acrylic and pastel.

Estimate €250-€350 (approx £217-£304)

[Click Here for Large Images & To Bid Lot 102](#)



**103**

**Mark Joyce (b. 1961)**

SUMMER BERRIES, 2003

oil on gessoed panel

signed, titled and dated on reverse; with typed

Green on Red Gallery label on reverse

16 x 12in. (40.64 x 30.48cm)

*Provenance:*

Green on Red Gallery, Dublin;

Collection of George and Maura McClelland

Mark Joyce was born in Dublin, Ireland, he received an MA in Painting from the Royal College of Art, London and has had solo exhibitions in Ireland, UK and the USA where he was artist in residence at the Bemis and the Albers Foundations. He has taught in Europe and Asia and was inaugural Professor of Art at Yale NUS College.

Estimate €400-€600 (approx £348-£522)

[Click Here for Large Images & To Bid Lot 103](#)



**104**

**Joe Sweeney (20th/21st Century)**

ABSTRACT, 1977

oil on canvas

signed and dated lower right

4½ x 4¼in. (11.43 x 10.80cm)

*Provenance:*

Collection of George and Maura McClelland

Estimate €100-€150 (approx £87-£130)

[Click Here for Large Images & To Bid Lot 104](#)





**105**

**Cecil King (1921-1986)**

UNTITLED

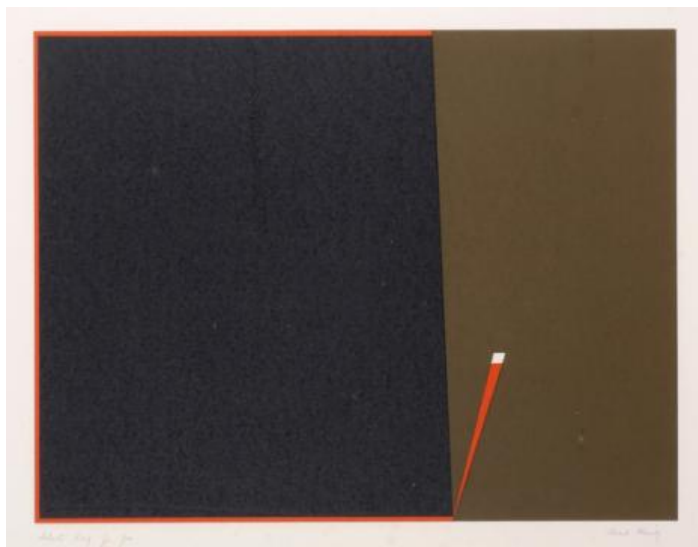
silkscreen print; (artist's proof)

signed lower right; inscribed [Artist's Proof for Joe]  
lower left

16½ x 21¼in. (41.91 x 53.98cm)

Estimate €200-€300 (approx £174-£261)

[Click Here for Large Images & To Bid Lot 105](#)



**106**

**Colin Middleton MBE RHA (1910-1983)**

UNTITLED 1969

poster print

signed with monogram and dated lower right

19¼ x 12¾in. (48.90 x 32.39cm)

*Provenance:*

Collection of George and Maura McClelland

Estimate €100-€150 (approx £87-£130)

[Click Here for Large Images & To Bid Lot 106](#)





**107**

**Charles Tyrrell (b.1950)**

P4.09

oil on aluminium

signed and dated on reverse; with Taylor galleries label inscribed with name, title and medium on reverse

13 x 13in. (33.02 x 33.02cm)

Accompanied by purpose made wooden storage case

Estimate €800-€1200 (approx £696-£1044)

[Click Here for Large Images & To Bid Lot 107](#)



**108**

**Robert Ballagh (b.1943)**

NO. 53, WINTER IN RONDA, 1980

silkscreen print; (artist's proof)

signed, inscribed [A/P] and dated lower right

16 x 23½in. (40.64 x 59.69cm)

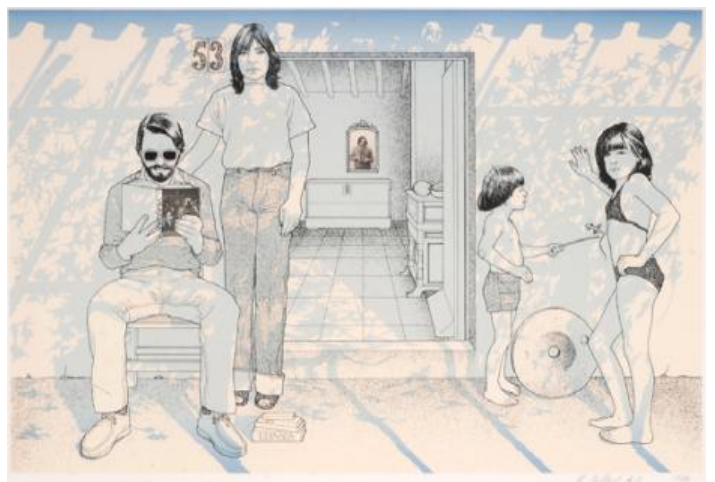
*Literature*

Ciaran Carty, Robert Ballagh, Magill, Dublin, 1986, pp.151-155, 221

Printed in an edition of 100. In the winter of 1978 Ballagh and his family visited Ronda, Malaga, staying in a cottage loaned to them by English artist Harry Thubron and his wife. No. 53, Winter in Roonda depicts Ballagh's family outside the Spanish cottage, with the artist holding a book on Velazquez, which he had purchased en route at the Prado in Madrid.

Estimate €500-€700 (approx £435-£609)

[Click Here for Large Images & To Bid Lot 108](#)



**109**

**Robert Ballagh (b.1943)**

THE THIRD OF MAY, AFTER GOYA, 1973

silkscreen print (no. 56 from an edition of 100)

signed, numbered and dated lower left, also with

embossed studio stamp lower left

19 x 24in. (48.26 x 60.96cm)

Estimate €300-€500 (approx £261-£435)

[Click Here for Large Images & To Bid Lot 109](#)



**110**

**Robert Ballagh (b.1943)**

VIEW OF THE EXAMINATION HALL, TRINITY COLLEGE, 1982

offset lithograph; (artist's proof)

signed and dated lower right; inscribed [A.P. To Joe, who

again made it possible] lower left

29 x 21½in. (73.66 x 54.61cm)

Estimate €400-€600 (approx £348-£522)

[Click Here for Large Images & To Bid Lot 110](#)



**111**

**Eoin Llewellyn (b.1973)**

**FUTURE HISTORIES**

mixed media

signed lower right

21 x 26½in. (53.34 x 67.31cm)

Eoin Llewellyn was born in Dublin, Ireland in 1973 and currently works between Ireland and Berlin, Germany. His works have received wide acclaim in Ireland and internationally and have been shortlisted for numerous prizes including The AIB and Victor Treacy awards. Llewellyn also won The Taylor Art award and the Tony O' Malley award, among others.

In 2011, Llewellyn was awarded the Whyte's Award for painting at the RHA, and was shortlisted for the Golden Fleece Award, both in Ireland.

In 2012, Llewellyn was nominated for the The Future Generation Art Prize established by the Victor Pinchuk Foundation by Kunstlerhaus Bethanien, Berlin.

Estimate €600-€800 (approx £522-£696)

[Click Here for Large Images & To Bid Lot 111](#)





**112**

**John Minihan (b.1946)**

**SEAMUS HEANEY AT THE GRAVESTONE OF LOUIS MACNEICE**

photographic print

signed lower right and inscribed [Seamus Heaney who read at the gravestone of Louis MacNeice in Carrowdore, Co. Down, for the Louis MacNeice centenary 2007, among the poets at the MacNeice centenary, Edna Coughlan, Michael Longley, Derek Mahon, Paul Muldoon, Richard Murphy.]

14 x 14¼in. (35.56 x 36.20cm)

John Minihan is an Irish photographer, born in Dublin in 1946 and raised in Athy, County Kildare. At the age of 12 he was brought to live in London, and went on to become an apprentice photographer with the Daily Mail. At the age of 15 he won the Evening Standard amateur photography competition. At 21 he became the youngest staff photographer for the Evening Standard. For thirty years he remained in London, returning every year to his hometown of Athy to record the people and their daily lives. Among his numerous photographic publications are *Photographs: Samuel Beckett* (1995); *Shadows from the Pale*, *Portrait of an Irish Town* (1996); and *An Unweaving of Rainbows, Images of Irish Writers* (1996).

Estimate €400-€600 (approx £348-£522)

[Click Here for Large Images & To Bid Lot 112](#)



**113**

**John Minihan (b.1946)**

EDNA O'BRIEN IN HER CHELSEA HOME, 1971

photographic print

signed and dated lower right and inscribed [Edna O'Brien in her Chelsea home, London]

9½ x 6¼in. (24.13 x 15.88cm)

Estimate €300-€500 (approx £261-£435)

[Click Here for Large Images & To Bid Lot 113](#)



**114**

**Tony O'Malley HRHA (1913-2003)**

UNTITLED ABSTRACT

hand-painted ceramic

signed with initials on underside

14 x 18 x 3in. (35.56 x 45.72 x 7.62cm)

*Provenance:*

Collection of George and Maura McClelland

Estimate €500-€700 (approx £435-£609)

[Click Here for Large Images & To Bid Lot 114](#)



**115**

**Michael Casson OBE (British, 1925-2003)**

JUG

ceramic

17½ x 10in. (44.45 x 25.40cm)

*Provenance:*

Candover Gallery, Hampshire, 1987;

Collection of George and Maura McClelland

Michael Casson, born in London, was an English studio potter, referred to as "respected and charismatic". He studied art and woodwork at Shoreditch College, and ceramics at Hornsey College of Art, and was one of the founding potters of the Craft Potters Association, a co-operative that acquired a shop and gallery in central London in 1958. In 1976, Casson devised and presented "The Craft of the Potter" for the BBC a series that involved practical demonstrations and discussion about the craft of the potter.

Estimate €400-€600 (approx £348-£522)

[Click Here for Large Images & To Bid Lot 115](#)

**116**

**Trevor Corser (British, 1938-2015)**

VASE

ceramic

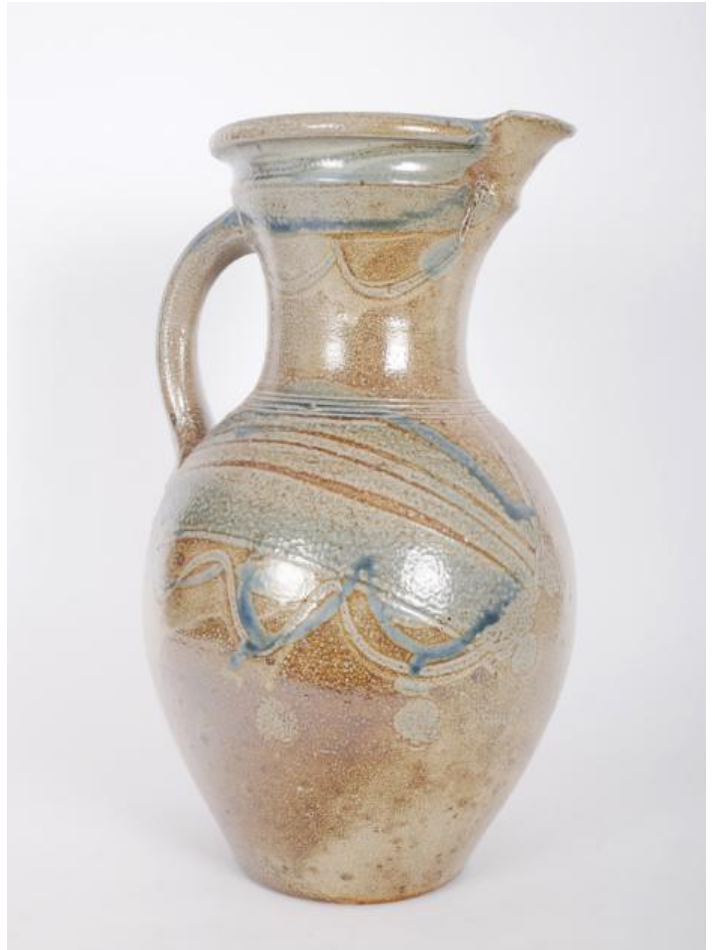
12½ x 7in. (31¾ x 17.78cm)

*Provenance:*

Collection of George and Maura McClelland

Estimate €100-€200 (approx £87-£174)

[Click Here for Large Images & To Bid Lot 116](#)





**117**

**David Frith (British, b. 1943)**

DISH

ceramic

16 x 16in. (40.64 x 40.64cm)

*Provenance:*

Collection of George and Maura McClelland

Estimate €100-€200 (approx £87-£174)

[Click Here for Large Images & To Bid Lot 117](#)



**118**

**Joan Carrillo Romero (Spanish, b. 1948)**

BOWL

ceramic

15½ x 15½ x 3¾in. (39.37 x 39.37 x 9.53cm)

*Provenance:*

Collection of George and Maura McClelland

Estimate €100-€200 (approx £87-£174)

[Click Here for Large Images & To Bid Lot 118](#)



**119**

**Micheen Bradley**

NO. 13

ceramic

with monogram on underside

9½ x 9½ x 3in. (24.13 x 24.13 x 7.62cm)

*Provenance:*

Greenlane Gallery, Dingle, 1994;

Collection of George and Maura McClelland

Estimate €100-€200 (approx £87-£174)

[Click Here for Large Images & To Bid Lot 119](#)



**120**

**Thomas Wollen (20th/21st Century)**

UNTITLED

ceramic

signed with initials on underside

14 x 16in. (35.56 x 40.64cm)

*Provenance:*

Collection of George and Maura McClelland

Estimate €200-€300 (approx £174-£261)

[Click Here for Large Images & To Bid Lot 120](#)



**121**

**20th Century Irish School**

MADONNA AND CHILD

fiberglass

25½ x 10½in. (64.77 x 26.67cm)

*Provenance:*

Collection of George and Maura McClelland

Estimate €150-€200 (approx £130-£174)

[Click Here for Large Images & To Bid Lot 121](#)



**122**

**Marius-Ernest Sabino (Italian, 1878-1961)**

L'IDOLE (PAIR) c.1928

opalescent glass; (2)

each titled at base lower centre; with 'Sabino France' at base on reverse

6½ x 5 x 4in. (16.51 x 12.70 x 10.16cm)

*Provenance:*

Collection of George and Maura McClelland

*Literature*

*The Hunter Gatherer - The Collection of George and Maura McClelland, The Irish Museum of Modern Art, Dublin, 2004, p.145 (one of pair, illustrated)*

Ernest-Marius Sabino was born in Sicily in 1878 and moved to France with his family when he was young. He attended the Ecole Nationale des Arts Decoratifs and the Ecole des Beaux-Arts in Paris. After World War I, Sabino founded a factory that manufactured traditional light fixtures of wood or bronze, and later switched to glass fixtures. A contemporary of Rene Lalique, Sabino designed his glassware and lighting himself until 1930, when he hired a production manager named Grivois, whose objective was to make lighting transcend banality. Sabino used pressed and moulded pattern glass in bas-relief. His commissions included lighting for hotels and restaurants, as well as for the 1935 oceanliner Normandie. Sabino's work was shown at the 1925 Exposition Internationale des Arts Decoratifs et Industriels Modernes, as well as at the 1925 Salon d'Automne, for which he had designed the general illumination of the halls, passageways, and antechambers.

Estimate €300-€500 (approx. £261-£435)

[Click Here for Large Images & To Bid Lot 122](#)





**123**

**Mary Swanzy HRHA (1882-1978)**

IN THE PINK

coloured pencil

with studio stamp lower right

6 x 3¼in. (15.24 x 8.26cm)

*Provenance:*

deVere's, 13 October 2008, lot 310;

Private collection

Estimate €200-€300 (approx £174-£261)

[Click Here for Large Images & To Bid Lot 123](#)



**124**

**Sine MacKinnon (1901-1996)**

POURQUEROLLES, LES ILES D'OR

oil on board

signed lower right; inscribed on label on reverse

13 x 16in. (33.02 x 40.64cm)

*Provenance:*

Collection of George and Maura McClelland

MacKinnon was born in Newcastle, Co. Down, and often painted in Galway as a young girl. She went to school in England and studied at the Slade. In 1929 the Fine Arts Society held a joint exhibition of Connemara paintings by MacKinnon and Stephen Bone. She later showed at the Reid, Redfern, Leicester, Lefèvre and Arthur Tooth Galleries, London, exhibiting mostly landscapes, still lifes, and occasionally surrealist pictures.

Estimate €600-€800 (approx £522-£696)

[Click Here for Large Images & To Bid Lot 124](#)



**125**

**Estella Frances Solomons HRHA (1882-1968)**

THE ROSSES, COUNTY DONEGAL

oil on board

signed with initials lower left; titled on reverse

10 x 14in. (25.40 x 35.56cm)

*Provenance:*

Collection of George and Maura McClelland

Estimate €400-€600 (approx £348-£522)

[Click Here for Large Images & To Bid Lot 125](#)



**126**

**Elizabeth Rivers (1903-1964)**

FIGURES IN COASTAL LANDSCAPE

oil on board; (unframed)

signed lower right; with painted composition on reverse

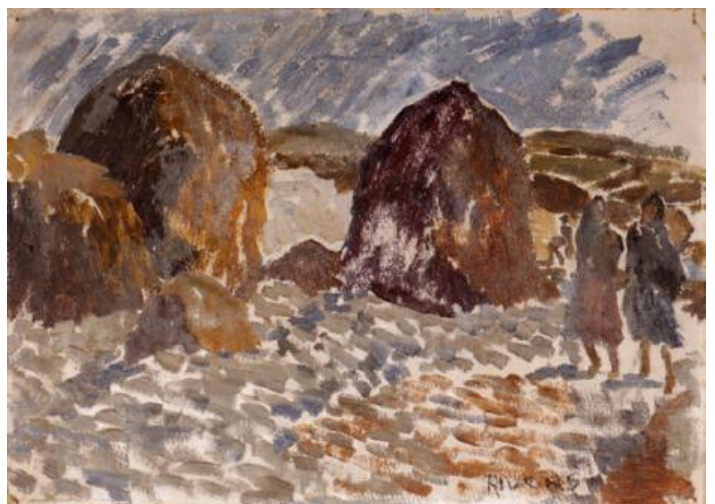
10 x 14in. (25.40 x 35.56cm)

*Provenance:*

Collection of George and Maura McClelland

Estimate €400-€600 (approx £348-£522)

[Click Here for Large Images & To Bid Lot 126](#)



**127**

**Elizabeth Rivers (1903-1964)**

OUT OF BEDLAM [1956], THIS MAN [1939] and A COLLECTION OF 15 ENGRAVINGS FOR THE WAGER & OTHER STORIES [1950]

limited edition texts; (2); engravings; (15)

all variously signed, annotated and numbered

*Provenance:*

Collection of George and Maura McClelland

Out of Bedlam, Dolmen Press, Glenageary, County Out of Bedlam, XXVII Wood Engravings by Elizabeth Rivers With Texts From Christopher Smart. June 1956. Beautifully crafted publication printed on Irish paper with texts set in Caslon type. Limited to 250 copies of which 200 were for sale; the first twenty-five were retained for the author. This copy is annotated in pencil on edition's page as 'artist's copy'. Contains twenty-seven of River's superb wood engravings. Hand-stitched at spine with decorated upper and titled spine. This was the only edition published.

Estimate €1500-€1800 (approx £1305-£1566)

[Click Here for Large Images & To Bid Lot 127](#)





**128**

**Paul Egestorff (1906-1995)**

NEAR ENNISKERRY, COUNTY WICKLOW

watercolour

signed lower left

10¾ x 15in. (27.31 x 38.10cm)

*Provenance:*

Collection of artists William Carron and Barbara Warren;

Whyte's, 29 September 2014, lot 67;

Private collection

Estimate €300-€400 (approx £261-£348)

[Click Here for Large Images & To Bid Lot 128](#)



**129**

**Phoebe Donovan (1902-1998)**

POPPIES

pastel and gouache

signed lower right

11¾ x 8¾in. (29.85 x 22.23cm)

Estimate €200-€300 (approx £174-£261)

[Click Here for Large Images & To Bid Lot 129](#)



**130**

**Bea Orpen HRHA (1913-1980)**

IN AN IPSWICH GARDEN, 1949

gouache on buff-coloured paper

signed and dated lower left; signed and titled on  
artist's studio label on reverse; also with exhibition  
label on reverse

9 x 9in. (22.86 x 22.86cm)

*Provenance:*

Whyte's, 6 December 2014, lot 259;

Private collection

Estimate €300-€400 (approx £261-£348)

[Click Here for Large Images & To Bid Lot 130](#)



**131**

**Anne Yeats (1919-2001)**

FLOWER STUDY

watercolour

signed lower left

12 x 10in. (30.48 x 25.40cm)

Estimate €400-€600 (approx £348-£522)

[Click Here for Large Images & To Bid Lot 131](#)



**132**

**Anne Yeats (1919-2001)**

STUDY ARISING OUT OF THE POEM and  
MOMENTARY TRACES (A PAIR)

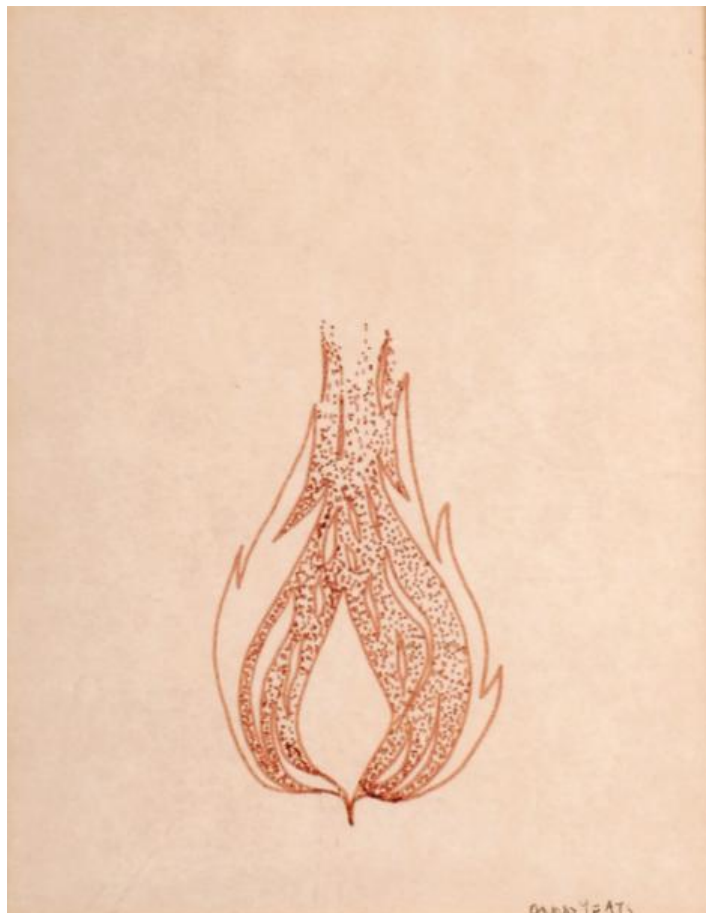
ink

signed lower right and lower left respectively; titled  
on reverse

7¼ x 5½in. (18.42 x 13.97cm)

Estimate €150-€200 (approx £130-£174)

[Click Here for Large Images & To Bid Lot 132](#)





**133**

**Jean Osborne (1926-1965)**

STILL LIFE

pastel on board

signed lower right; details of artist and provenance  
inscribed on reverse

19½ x 14in. (49.53 x 35.56cm)

*Provenance:*

Collection of George and Maura McClelland

Jean Meikle Osborne was a member in the late 1940s of the Euston Road School of painting that pursued naturalism and sought to bring art to a wider audience. It was here she met and married fellow artist Dennis Henry Osborne (1919-2016). They moved to Donegal first where the landscape influenced their work, and then emigrated in 1952 to Canada, where Dennis met with some success. They returned to Ireland in 1960. Jean died in 1965.

Estimate €150-€200 (approx £130-£174)

[Click Here for Large Images & To Bid Lot 133](#)



**134**

**Tom Carr HRHA HRUA ARWS (1909-1999)**

STRAND

pencil and wash

signed lower left

6¾ x 10¼in. (17.15 x 26.04cm)

*Provenance:*

Emer Gallery, Belfast;

Private collection

Estimate €300-€400 (approx £261-£348)

[Click Here for Large Images & To Bid Lot 134](#)



**135**

**Tom Carr HRHA HRUA ARWS (1909-1999)**

THE CORNFIELD, 1960

watercolour

signed lower right; inscribed on Fine Art Society  
[London] label on reverse

9¼ x 13in. (23½ x 33.02cm)

*Provenance:*

The Fine Art Society, London;

Collection of George and Maura McClelland

Estimate €200-€300 (approx £174-£261)

[Click Here for Large Images & To Bid Lot 135](#)



**136**

**Tom Carr HRHA HRUA ARWS (1909-1999)**

THE POSTMAN, 1963

ink

signed and dated lower right

9 x 7½in. (22.86 x 19.05cm)

*Provenance:*

Emer Gallery, Belfast;

Private collection

Estimate €200-€300 (approx £174-£261)

[Click Here for Large Images & To Bid Lot 136](#)



**137**

**Tom Carr HRHA HRUA ARWS (1909-1999)**

THE SCHOOL HOUSE, BALLYDRAIN

lithograph; (no. 32 from an edition of 40);

(unframed)

signed in pencil in the margin lower right; titled and numbered lower left

25¾ x 19¼in. (65.41 x 48.90cm)

*Provenance:*

Collection of George and Maura McClelland

Sheet size: 30 by 22in.

Also with this lot, print of Four Figures, 1974, bears 'J.D.' lower right and numbered [21/50] lower left. dimensions 25 by 36in. Both works unframed

Estimate €150-€250 (approx £130-£217)

[Click Here for Large Images & To Bid Lot 137](#)



**138**

**Thomas Ryan PPRHA (b.1929)**

STUDENT, 1965

pencil

signed and dated [26 Nov 1965] lower right; inscribed [ To George & Maura McClelland in remembrance of my first Belfast exhibition, September 1967. One of my students - forget his name, drawn at the National College of Art] on reverse

9¾ x 7¾in. (24.77 x 19.69cm)

*Provenance:*

A gift from the artist to George and Maura McClelland

Estimate €200-€300 (approx £174-£261)

[Click Here for Large Images & To Bid Lot 138](#)





**139**

**Thomas Ryan PPRHA (b.1929)**

KEN DOLAN, ARTIST AND LECTURER, 1965

pencil

signed and dated [25 November 1965] lower left;

signed, titled and dated on reverse

19 x 9½in. (48.26 x 24.13cm)

*Provenance:*

Collection of George and Maura McClelland

*Literature*

Estimate €200-€300 (approx £174-£261)

[Click Here for Large Images & To Bid Lot 139](#)



**140**

**Thomas Ryan PPRHA (b.1929)**

SEATED NUDE

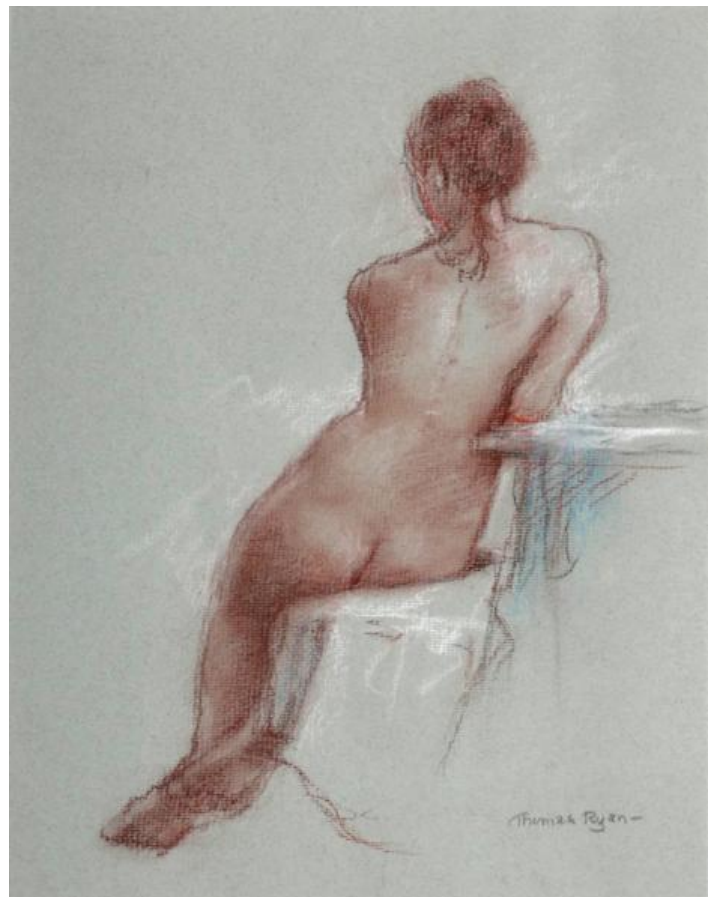
conté

signed lower right

14¼ x 11¼in. (36.20 x 28.58cm)

Estimate €400-€600 (approx £348-£522)

[Click Here for Large Images & To Bid Lot 140](#)



**141**

**James S.**

**J Fay**

NICCOLÓ PAGANINI

watercolour on paper

signed lower centre; inscribed on reverse

5 x 4in. (12.70 x 10.16cm)

Estimate €100-€200 (approx £87-£174)

[Click Here for Large Images & To Bid Lot 141](#)



**142**

**Christy Brown (1932-1981)**

MON CHERIE

oil on board

signed and dated ['68] lower left; inscribed with title and medium on label on reverse; with Millar's label on reverse

31½ x 23½in. (80.01 x 59.69cm)

Christy Brown was brilliantly played by Daniel Day-Lewis in the Oscar-winning film *My Left Foot*. But the complexities of his life, together with his struggle to be understood - and taken seriously - have only recently come to light. Those complexities were explored in a superb exhibition at the Little Museum of Dublin in 2015. The exhibition later travelled to New York where it went on view at the American Irish Historical Society on 5th Avenue from 11 to 24 November.

Estimate €1000-€1500 (approx £870-£1305)

[Click Here for Large Images & To Bid Lot 142](#)



**143**

**Jack Donovan (1934-2014)**

TWO FIGURES, ONE NUDE, 1977

oil on board

signed and dated lower right

28½ x 27in. (72.39 x 68.58cm)

*Provenance:*

Collection of George and Maura McClelland

Estimate €600-€800 (approx £522-£696)

[Click Here for Large Images & To Bid Lot 143](#)



**144**

**Jack Donovan (1934-2014)**

FIGURE ON A BEACH

oil on board

signed and dated lower left; with Cummins

Galleries label on reverse

17 x 15in. (43.18 x 38.10cm)

*Provenance:*

Collection of George and Maura McClelland

Estimate €600-€800 (approx £522-£696)

[Click Here for Large Images & To Bid Lot 144](#)





**145**

**Alex McKenna (20th/21st Century)**

COTTAGES, DOOAGH, ACHILL

oil on canvas

signed lower right; signed with initials and titled on reverse

36 x 40in. (91.44 x 101.60cm)

Estimate €600-€800 (approx £522-£696)

[Click Here for Large Images & To Bid Lot 145](#)



**146**

**Alex McKenna (20th/21st Century)**

WINNER TAKES IT ALL

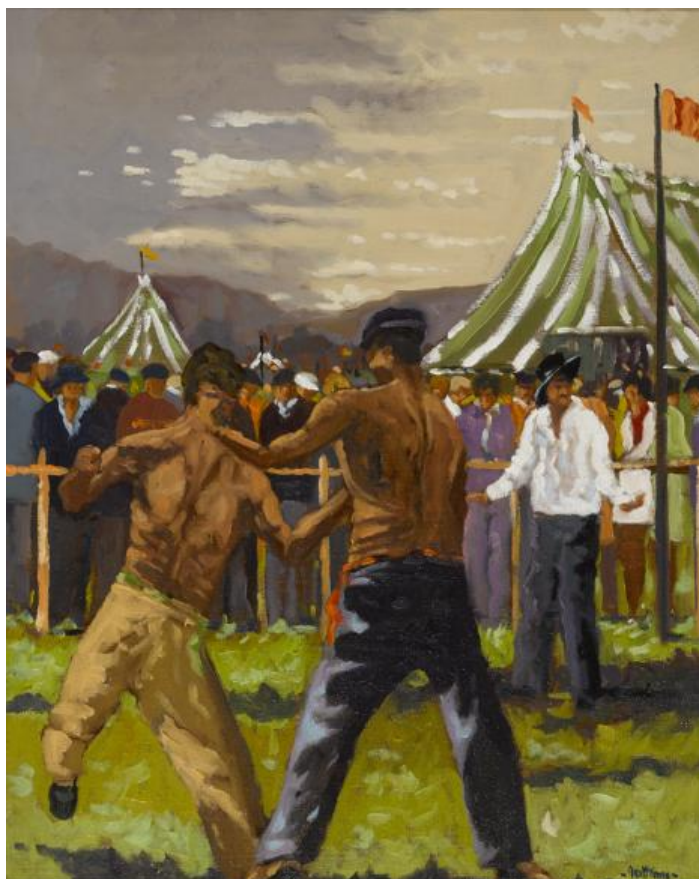
oil on canvas

signed lower right; signed and titled on reverse

20 x 16in. (50.80 x 40.64cm)

Estimate €400-€600 (approx £348-£522)

[Click Here for Large Images & To Bid Lot 146](#)



**147**

**Leo Earley (1925-2001)**

BRITTAS BAY, COUNTY WICKLOW

oil on board

signed lower left; titled on artist's label on reverse

11¼ x 15¼in. (28.58 x 38.74cm)

Estimate €600-€800 (approx £522-£696)

[Click Here for Large Images & To Bid Lot 147](#)



**148**

**Eileen Meagher (b.1946)**

SHEEP AT LOUGH INAGH, CONNEMARA, 2002

and FAMINE COTTAGE, ROUNDSTONE BOG,  
CONNEMARA, 2002 (A PAIR)

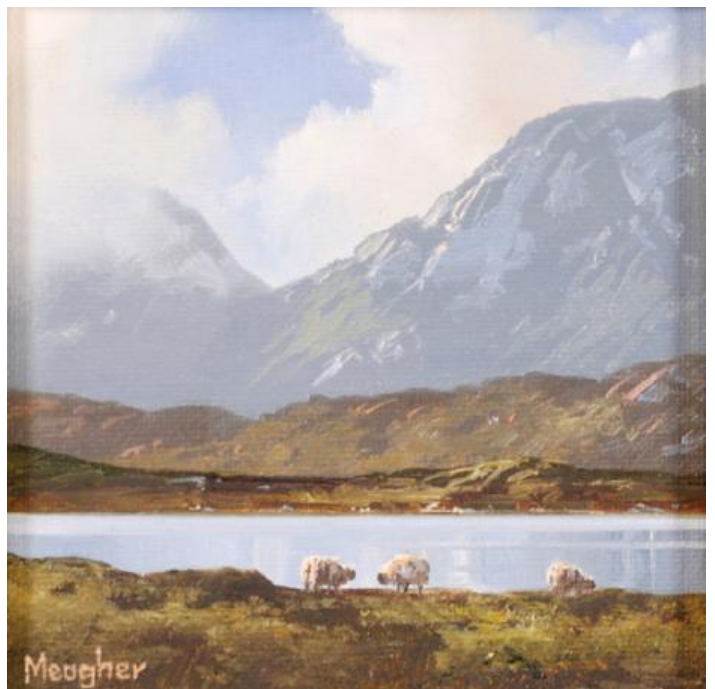
oil on board; (2)

both signed lower left; both titled and dated on  
reverse

4½ x 4½in. (11.43 x 11.43cm)

Estimate €400-€600 (approx £348-£522)

[Click Here for Large Images & To Bid Lot 148](#)



**149**

**Ciarán Clear (1920-2000) MOONRISE, ATLANTIC OCEAN**

watercolour, pencil and gouache on brown paper  
signed lower right; titled on reverse  
6½ x 9½in. (16.51 x 24.13cm)

Estimate €300-€500 (approx £261-£435)

[Click Here for Large Images & To Bid Lot 149](#)



**150**

**Neville Henderson (20th Century)**

**HUBAND BRIDGE AND ST. STEPHEN'S CHURCH**  
("THE PEPPERCANISTER"), DUBLIN

oil on board  
signed lower left  
9½ x 11½in. (24.13 x 29.21cm)

Estimate €300-€500 (approx £261-£435)

[Click Here for Large Images & To Bid Lot 150](#)





**151**

**Stephen Cullen (b.1959)**

STILL LIFE WITH FRUIT, 1990

oil on canvas

signed and dated lower right

22 x 28in. (55.88 x 71.12cm)

Estimate €600-€800 (approx £522-£696)

[Click Here for Large Images & To Bid Lot 151](#)



**152**

**Elizabeth Cope (b.1952)**

STILL LIFE WITH FRUIT

oil on board

signed lower left; signed again on reverse

15 x 18in. (38.10 x 45.72cm)

Estimate €600-€800 (approx £522-£696)

[Click Here for Large Images & To Bid Lot 152](#)



**153**

**David ffrench le Roy (b.1971)**

STILL LIFE WITH EARTHENWARE AND LEMONS

oil on board

signed lower right

15 x 19¾in. (38.10 x 50.17cm)

Estimate €1000-€1500 (approx £870-£1305)

[Click Here for Large Images & To Bid Lot 153](#)



**154**

**Liam Treacy (1934-2004)**

BY THE GREENHOUSE, 1989

oil on board

signed lower right; titled and dated on reverse

9¾ x 11½in. (24.77 x 29.21cm)

Estimate €600-€800 (approx £522-£696)

[Click Here for Large Images & To Bid Lot 154](#)



**155**

**Norman Teeling (b.1944)**

SUNNY DAY

oil on canvas board

signed lower left; titled on reverse

23 x 19½in. (58.42 x 49.53cm)

Estimate €600-€800 (approx £522-£696)

[Click Here for Large Images & To Bid Lot 155](#)



**156**

**Norman Teeling (b.1944)**

AFTERNOON DELIGHT

oil on canvas board

signed lower right; titled on reverse

13 x 17in. (33.02 x 43.18cm)

Estimate €500-€700 (approx £435-£609)

[Click Here for Large Images & To Bid Lot 156](#)





**157**

**Brett McEntagart RHA (b.1939)**

SCENE BY THE RIVER LEE, CORK, 1995

oil on board

signed with initials lower right; with typed

exhibition label on reverse

16 x 24in. (40.64 x 60.96cm)

Estimate €600-€800 (approx £522-£696)

[Click Here for Large Images & To Bid Lot 157](#)



**158**

**Brett McEntagart RHA (b.1939)**

PATH BY THE DODDER, DUBLIN, 2002

oil on canvas

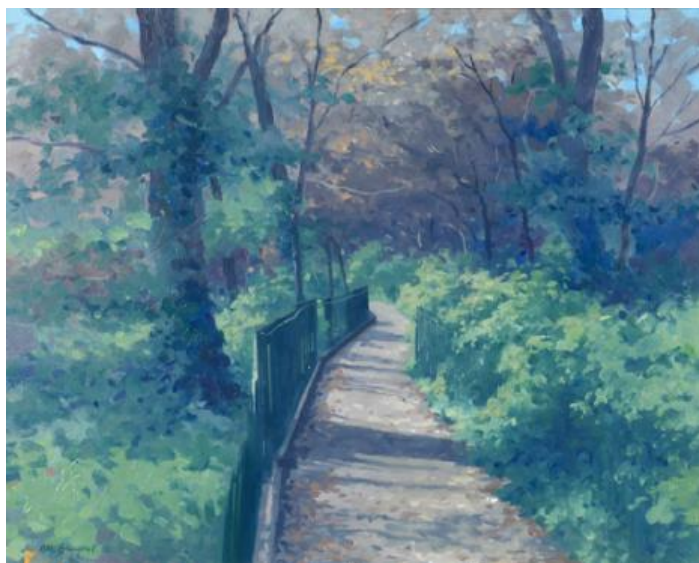
signed and dated lower left; inscribed on label on

reverse

16 x 20in. (40.64 x 50.80cm)

Estimate €500-€700 (approx £435-£609)

[Click Here for Large Images & To Bid Lot 158](#)



**159**

**David Anthony Overend (b.1932)**

BALLINTOY CHURCH, COUNTY ANTRIM

oil on canvas

signed lower left; titled on reverse

14¾ x 22¾in. (37.47 x 57.79cm)

*Provenance:*

Gormleys Fine Art;

Private collection

Estimate €500-€700 (approx £435-£609)

[Click Here for Large Images & To Bid Lot 159](#)



**160**

**Diarmuid Larkin (1918-1989)**

THE CORNFIELD, 1990

oil on board

signed lower right; titled and dated on reverse

7½ x 9½in. (19.05 x 24.13cm)

Estimate €300-€500 (approx £261-£435)

[Click Here for Large Images & To Bid Lot 160](#)



**161**

**Brendan Hayes**

VIEW AT JOYCE'S TOWER, SANDYCOVE, 1986

oil on board

signed lower left; signed, titled and dated on reverse

22½ x 45in. (57.15 x 114.30cm)

Estimate €300-€500 (approx £261-£435)

[Click Here for Large Images & To Bid Lot 161](#)



**162**

**Gordon King (b.1939)**

SCULLS AT HENLEY

oil on canvas

signed lower left

15½ x 19½in. (39.37 x 49.53cm)

Estimate €400-€600 (approx £348-£522)

[Click Here for Large Images & To Bid Lot 162](#)





**163**

**Jacqueline Stanley ARCA (b.1928)**

FLOWER ISLAND, COOLAGHMORE, COUNTY  
KILKENNY

oil on canvas

signed lower right; inscribed on label on reverse  
24 x 24in. (60.96 x 60.96cm)

*Provenance:*

Hallward Gallery, Dublin;

Private collection

Estimate €300-€500 (approx £261-£435)

[Click Here for Large Images & To Bid Lot 163](#)



**164**

**Michael O'Neill (b.1930)**

DUBLIN MOUNTAINS

oil on board

signed lower right

14 x 22½in. (35.56 x 57.15cm)

Estimate €600-€800 (approx £522-£696)

[Click Here for Large Images & To Bid Lot 164](#)



**165**

**Michael O'Neill (b.1930)**

HARBOUR SCENE

oil on board

signed lower right

14½ x 22½in. (36.83 x 57.15cm)

Estimate €600-€800 (approx £522-£696)

[Click Here for Large Images & To Bid Lot 165](#)



**166**

**Owen Walsh (1933-2002)**

TOWN

crayon

signed lower right

18½ x 26¼in. (46.99 x 66.68cm)

Estimate €500-€700 (approx £435-£609)

[Click Here for Large Images & To Bid Lot 166](#)



**167**

**George Galway MacCann ARCA (1909-1967)**

STILL LIFE

oil on board

signed lower left; signed and inscribed with title and dedication [for a good friend. Zoltan Lewinter - Frankl, Autumn 1956] on reverse; with Collection of Z. Lewinter-Frankl label on reverse; Catalogue Number 222

11 x 13in. (27.94 x 33.02cm)

*Provenance:*

Collection of George and Maura McClelland

Estimate €400-€600 (approx £348-£522)

[Click Here for Large Images & To Bid Lot 167](#)



**168**

**Tom Cullen (1934-2001)**

MERCHANT'S ARCH, TEMPLE BAR, DUBLIN

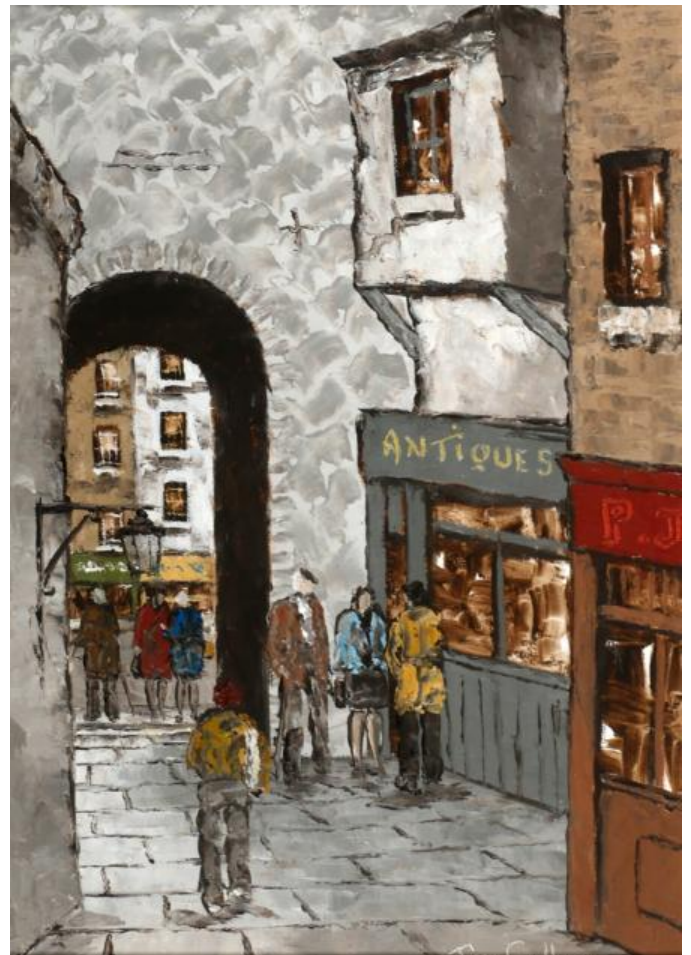
oil on canvas

signed lower right

13½ x 9½in. (34.29 x 24.13cm)

Estimate €300-€500 (approx £261-£435)

[Click Here for Large Images & To Bid Lot 168](#)





**169**

**Tom Cullen (1934-2001)**

ALONG THE CANAL, DUBLIN

oil on canvas

signed lower left

13¼ x 9¾in. (33.66 x 24.77cm)

Estimate €300-€500 (approx £261-£435)

[Click Here for Large Images & To Bid Lot 169](#)



**170**

**Tom Cullen (1934-2001)**

MERCHANT'S ARCH, TEMPLE BAR, DUBLIN, 1983

oil on canvas; (unframed)

signed and dated lower right

13¼ x 9¾in. (33.66 x 23½cm)

Estimate €250-€350 (approx £217-£304)

[Click Here for Large Images & To Bid Lot 170](#)



**171**

**Liam C. Martin (1934-1998)**

MOUNTPLEASANT SQUARE, DUBLIN, 1976

ink

signed and dated lower right

15½ x 22¾in. (39.37 x 57.79cm)

Estimate €150-€200 (approx £130-£174)

[Click Here for Large Images & To Bid Lot 171](#)



**172**

**John T. Bannon (b. 1933)**

THE BARRICADE, 1916 RISING

oil on canvas

signed lower right

23½ x 29in. (59.69 x 73.66cm)

Estimate €600-€800 (approx £522-£696)

[Click Here for Large Images & To Bid Lot 172](#)



**173**

**John T. Bannon (b. 1933)**

GENERAL POST OFFICE, 1916 RISING

oil on canvas

signed lower right

11½ x 15½in. (29.21 x 39.37cm)

Estimate €300-€500 (approx £261-£435)

[Click Here for Large Images & To Bid Lot 173](#)



**174**

**Rowland Hill ARUA (1915-1979)**

A STRONG BREEZE, IRISH SEA

oil on canvas

signed lower right; inscribed on label on reverse

20 x 30in. (50.80 x 76.20cm)

*Provenance:*

Family of the artist

LANDSCAPE

Estimate €800-€1200 (approx £696-£1044)

[Click Here for Large Images & To Bid Lot 174](#)





**175**

**Rowland Hill ARUA (1915-1979)**

LAKESIDE COTTAGES AND TWELVE PINS, CONNEMARA

oil on canvas

signed lower right; inscribed on label on reverse

19½ x 29¾in. (49.53 x 75.57cm)

*Provenance:*

Family of the artist

LANDSCAPE

Estimate €800-€1200 (approx £696-£1044)

[Click Here for Large Images & To Bid Lot 175](#)



**176**

**Rowland Hill ARUA (1915-1979)**

RIVER SCENE WITH COTTAGES IN THE DISTANCE

oil on canvas

signed lower left

15¼ x 19¼in. (38.74 x 48.90cm)

Estimate €400-€600 (approx £348-£522)

[Click Here for Large Images & To Bid Lot 176](#)



**177**

**George Campbell RHA (1917-1979)**

MAAM VALLEY, CONNEMARA, COUNTY GALWAY

pastel

6½ x 9½in. (16.51 x 24.13cm)

*Provenance:*

Kenny Gallery, Galway;

Estimate €200-€300 (approx £174-£261)

[Click Here for Large Images & To Bid Lot 177](#)



**178**

**Hélène Paignant (French, 1922-2007)**

FISH MARKET, HONFLEUR, FRANCE

oil on canvas

signed lower right; titled on reverse

9 x 12¼in. (22.86 x 31.12cm)

Estimate €100-€200 (approx £87-£174)

[Click Here for Large Images & To Bid Lot 178](#)



**179**

**U. Spry (20th Century)**

BLUE LOUGH, MOURNE MOUNTAINS and SHIMNA

RIVER, MOURNE MOUNTAINS, COUNTY DOWN (A PAIR)

watercolour; (2)

both signed lower right; both titled lower left

6¾ x 9¾in. (17.15 x 24.77cm)

Estimate €100-€200 (approx £87-£174)

[Click Here for Large Images & To Bid Lot 179](#)





**180**

**Frank McKelvey RHA RUA (1895-1974)**

VIEW OF HOLYWOOD, COUNTY DOWN

watercolour

signed lower right

10¼ x 14¼in. (26.04 x 36.20cm)

Estimate €800-€1200 (approx £696-£1044)

[Click Here for Large Images & To Bid Lot 180](#)



**181**

**Frank Egginton RCA (1908-1990)**

BALLYSKEAGH, COUNTY DOWN

watercolour

signed lower right; titled on reverse

14½ x 20½in. (36.83 x 52.07cm)

LANDSCAPE

Estimate €600-€800 (approx £522-£696)

[Click Here for Large Images & To Bid Lot 181](#)



**182**

**Maurice Canning Wilks RUA ARHA (1910-1984)**

QUIET DAY, BUNBEG, COUNTY DONEGAL

watercolour and pencil

signed lower right; titled in the mount lower left

9½ x 14½in. (24.13 x 36.83cm)

Estimate €400-€600 (approx £348-£522)

[Click Here for Large Images & To Bid Lot 182](#)



**183**

**Maurice Canning Wilks RUA ARHA (1910-1984)**

NEAR TYRELLA, COUNTY DOWN

watercolour and pencil

signed lower right; titled in the mount lower left

9½ x 14½in. (24.13 x 36.83cm)

Estimate €400-€600 (approx £348-£522)

[Click Here for Large Images & To Bid Lot 183](#)



**184**

**David Bond Walker (1891-1977)**

VILLAGE SCENE

oil on board

signed lower left

15¾ x 20¾in. (40.01 x 52.71cm)

Estimate €300-€500 (approx £261-£435)

[Click Here for Large Images & To Bid Lot 184](#)



**185**

**Donald Rayner (1907-1977)**

COTTAGES WITH MOUNTAINS IN THE DISTANCE,  
1962

watercolour

signed and dated lower left

18½ x 23½in. (46.99 x 59.69cm)

Estimate €200-€300 (approx £174-£261)

[Click Here for Large Images & To Bid Lot 185](#)





**186**

**Sean O'Connor (1909-1992)**

THE FLASH FLOOD BRIDGE, BLACK VALLEY.

KILLARNEY, COUNTY KERRY

watercolour

signed lower left

10¾ x 14¾in. (27.31 x 37.47cm)

Estimate €200-€300 (approx £174-£261)

[Click Here for Large Images & To Bid Lot 186](#)



**187**

**Sean O'Connor (1909-1992)**

MAHONEY'S POINT, KILLARNEY, COUNTY KERRY

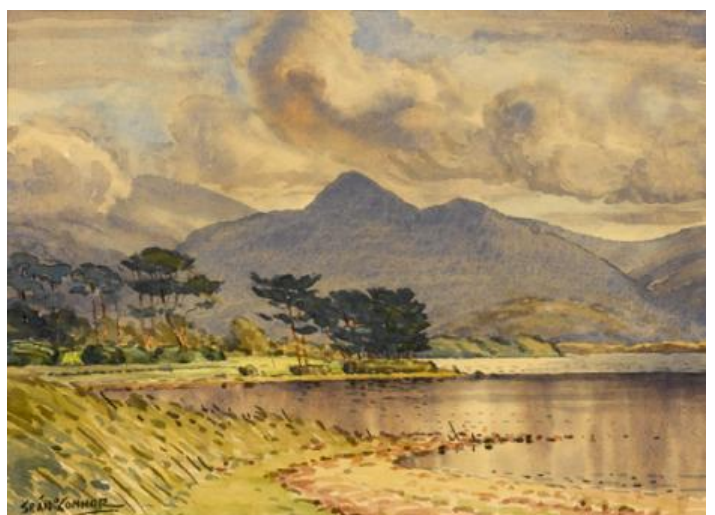
watercolour

signed lower left; titled on reverse

10¾ x 14¾in. (27.31 x 37.47cm)

Estimate €200-€300 (approx £174-£261)

[Click Here for Large Images & To Bid Lot 187](#)



**188**

**Sean O'Connor (1909-1992)**

GOLF COURSE WITH MOUNTAINS IN THE DISTANCE

watercolour

signed lower left

11 x 14¾in. (27.94 x 37.47cm)

Estimate €200-€300 (approx £174-£261)

[Click Here for Large Images & To Bid Lot 188](#)



**189**

**Violet McAdoo (1896-1961)**

THREE FIGURES ON THE STEPS

oil on canvas

inscribed [V McAdoo] on reverse

30 x 20in. (76.20 x 50.80cm)

*Provenance:*

Collection of George and Maura McClelland

Born in Cookstown, Co. Tyrone, Violet McAdoo studied at the Belfast College of Art and the RCA, London, whence she graduated in 1927. She returned to Northern Ireland and supported herself through teaching as well as exhibiting with the RHA, WCSI, the Living Artists exhibitions, and the Ulster Academy of which she was at one time vice-president. Examples of her work hang in the Royal Ulster Academy and the Ulster Museum, Belfast.

Estimate €500-€700 (approx £435-£609)

[Click Here for Large Images & To Bid Lot 189](#)





**190**

**Violet McAdoo (1896-1961)**

ITALIAN SQUARE

watercolour on board

signed and dated lower left; original artists label with title, artists name and address [39 Rugby Road, Belfast] on reverse

16 x 14½in. (40.64 x 36.83cm)

*Provenance:*

Collection of George and Maura McClelland

Born in Cookstown, Co. Tyrone, Violet McAdoo studied at the Belfast College of Art and the RCA, London, whence she graduated in 1927. She returned to Northern Ireland and supported herself through teaching as well as exhibiting with the RHA, WCSI, the Living Artists exhibitions, and the Ulster Academy of which she was at one time vice-president. Examples of her work hang in the Royal Ulster Academy and the Ulster Museum, Belfast.

Estimate €400-€500 (approx £348-£435)

[Click Here for Large Images & To Bid Lot 190](#)





**191**

**Samuel John Lamorna Birch RA RWS (1869-1955)**

A COOL SPOT AT CLAPPER MILL, LAMORNA, CORNWALL, 1941

oil on board

signed and dated lower left; signed and titled on reverse 14½

x 17½in. (36.83 x 44.45cm)

*Provenance:*

Collection of George and Maura McClelland

Lamorna Birch was born in Egremont, Cheshire, England. He was self-taught as an artist, except for a brief period of study at the Académie Colarossi in Paris during 1895.

Birch settled in Lamorna, Cornwall in 1892. Many of his most famous pictures date from this time and the beautiful Lamorna Cove is usually their subject matter. He was attracted to Cornwall by the Newlyn group of artists but he ended up starting a second group based around his adopted home of Lamorna. He exhibited at the Royal Academy from 1893, was elected as an Associate (ARA) in 1926 and made a Royal Academician (RA) in 1934, and showed more than two hundred paintings there.[ He held his first one-man exhibition at the Fine Art Society in 1906 and is said to have produced more than 20,000 pictures. Like a number of his contemporaries, he was profiled as an 'Artist of Note' in The Artist magazine, by Richard Seddon, in the June 1944 edition.

The exhibition Shades of British Impressionism Lamorna Birch and his Circle was shown at Warrington Museum & Art Gallery in the Mezzanine in October 2004. This details his links with Henry Scott Tuke and Thomas Cooper Gotch and many others who settled in the artists' colony in the 1880s and 1890s. "These painters helped to change the face of British art. Their emphasis on colour and light, truth and social realism brought about a revolution in British art." says the catalogue for the show.

Estimate €1500-€2000 (approx £1305-£1740)

[Click Here for Large Images & To Bid Lot 191](#)



**192**

**John Anthony Park ROI RBA (1880-1962)**

EASTER BLOOMS IN HAMPSHIRE

oil on panel

signed lower right, titled on reverse

13 x 16in. (33.02 x 40.64cm)

*Provenance:*

Collection of George and Maura McClelland

Park moved to St. Ives at the age of 18 and became one of the best known of the early St Ives painters. He studied under Julian Olsson who encouraged him to go to Paris. From 1905 he attended the Atelier Colarossi where he was a contemporary of Modigliani. Strongly influenced by the French Impressionists, Park's work is always brightly coloured and spontaneous. He exhibited coastal and fishing scenes at the Royal Academy, the Paris Salon and St. Ives' Society of Artists. His work is held in the public collections of the Manchester City Art Gallery, Salford Art Gallery and the Tate.



Estimate €1500-€2000 (approx £1305-£1740)

[Click Here for Large Images & To Bid Lot 192](#)

**193**

**James Humbert Craig RHA RUA (1877-1944)**

SAILBOATS

watercolour on paper

signed lower left

4¾ x 6¾in. (12.07 x 17.15cm)

*Provenance:*

Collection of George and Maura McClelland

Estimate €500-€700 (approx £435-£609)

[Click Here for Large Images & To Bid Lot 193](#)





**194**

**Frederick O'Neill Gallagher (fl.1906-1917)**

RIVER, SOUTH OF MORET, 1909

oil on canvas; (unframed)

signed and dated lower right; title inscribed faintly  
on reverse

9½ x 13¾in. (24.13 x 34.93cm)

*Provenance:*

Collection of George and Maura McClelland

Estimate €400-€600 (approx £348-£522)

[Click Here for Large Images & To Bid Lot 194](#)



**195**

**Georgina Moutray Kyle RUA (1865-1950)**

COTTAGES UNDER BLUE MOUNTAIN

oil on canvas

17½ x 14in. (44.45 x 35.56cm)

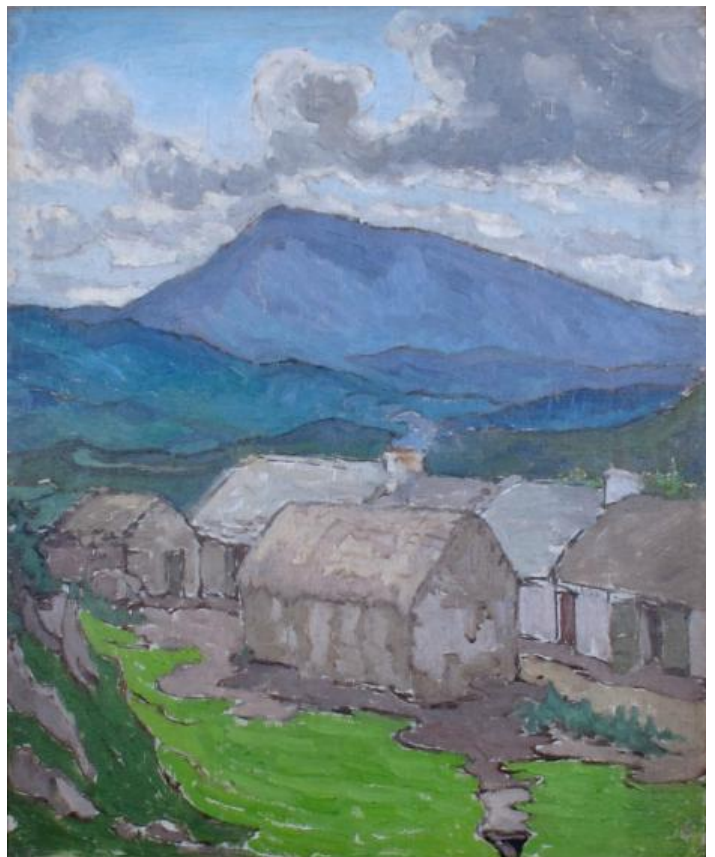
*Provenance:*

Collection of George and Maura McClelland

Born at Craigavad, Co. Down, Georgina Moutray Kyle studied at Colarossi's in Paris during the 1880s, returning afterwards to Ireland with a distinctly modern palette and Post-Impressionist style. She became an active committee member of the Belfast Art Society (later called the Ulster Academy of Arts) and was a dominant persona in Belfast exhibitions in the 1920s and 30s (see Snoddy, page 328). A retrospective was held in 2004 at The Naughton Gallery, Queen's University, Belfast.

Estimate €350-€450 (approx £304-£391)

[Click Here for Large Images & To Bid Lot 195](#)





**196**

**Georgina Moutray Kyle RUA (1865-1950)**

BELFAST DOCKS

oil on board

signed lower left; inscribed with title in another's hand on reverse

9 x 12in. (22.86 x 30.48cm)

*Provenance:*

Collection of George and Maura McClelland

Estimate €300-€400 (approx £261-£348)

[Click Here for Large Images & To Bid Lot 196](#)



**197**

**Joseph William Carey RUA (1859-1937)**

RIVER LAGAN, COUNTY DOWN, 1907

watercolour

signed and dated [October 1907] lower right

10 x 14in. (25.40 x 35.56cm)

Estimate €400-€600 (approx £348-£522)

[Click Here for Large Images & To Bid Lot 197](#)



**198**

**Joseph William Carey RUA (1859-1937)**

**CORNMARKET AND THE OLD THEATRE, BELFAST**

1840

watercolour

titled in the lower margin of the picture mount

8 x 11in. (20.32 x 27.94cm)

*Provenance:*

F.G. Davis & Sons, Belfast:

Private collection

Estimate €400-€600 (approx £348-£522)

[Click Here for Large Images & To Bid Lot 198](#)



**199**

**Henry William Moss (1859-1944)**

**COWS IN PASTURE**

oil on canvas

signed lower right

20 x 24in. (50.80 x 60.96cm)

Estimate €300-€500 (approx £261-£435)

[Click Here for Large Images & To Bid Lot 199](#)



**200**

**Late 19th/Early 20th Century Irish School**

LANDSCAPE WITH MOUNTAIN IN THE DISTANCE

watercolour

5 x 7in. (12.70 x 17.78cm)

Estimate €200-€300 (approx £174-£261)

[Click Here for Large Images & To Bid Lot 200](#)



**201**

**Gladys Wynne (1876-1968)**

BEACH SCENE

watercolour

signed lower right

4½ x 13½in. (11.43 x 34.29cm)

Estimate €100-€200 (approx £87-£174)

[Click Here for Large Images & To Bid Lot 201](#)





**202**

**Alexander Williams RHA (1846-1930)**

COASTAL LANDSCAPE

oil on board

13½ x 23½in. (34.29 x 59.69cm)

Estimate €600-€800 (approx £522-£696)

[Click Here for Large Images & To Bid Lot 202](#)



**203**

**Alexander Williams RHA (1846-1930)**

CLIFFS BY THE COAST

oil on panel

signed lower right

9½ x 17½in. (24.13 x 44.45cm)

Estimate €600-€800 (approx £522-£696)

[Click Here for Large Images & To Bid Lot 203](#)



**204**

**Alexander Williams RHA (1846-1930)**

VICTORIA ROCKS, MIDDLE LAKE, KILLARNEY,  
COUNTY KERRY

oil on board

signed lower right; titled on reverse

10 x 18in. (25.40 x 45.72cm)

Estimate €600-€800 (approx £522-£696)

[Click Here for Large Images & To Bid Lot 204](#)



**205**

**Alexander Williams RHA (1846-1930)**

ROSS CASTLE, KILLARNEY, COUNTY KERRY

watercolour

signed lower right

9½ x 17¾in. (24.13 x 45.09cm)

Estimate €400-€600 (approx £348-£522)

[Click Here for Large Images & To Bid Lot 205](#)



**206**

**Alexander Williams RHA (1846-1930)**

ACHILL COAST, COUNTY MAYO

watercolour

signed lower right; titled lower left

10½ x 18½in. (26.67 x 46.99cm)

Estimate €400-€600 (approx £348-£522)

[Click Here for Large Images & To Bid Lot 206](#)



**207**

**Alexander Williams RHA (1846-1930)**

GLENDARARY RIVER, ACHILL SOUND, COUNTY MAYO

watercolour

signed and titled lower left

13 x 23in. (33.02 x 58.42cm)

Estimate €500-€700 (approx £435-£609)

[Click Here for Large Images & To Bid Lot 207](#)





**208**

**Montgomery Ansell (19th/20th Century)**

THE MIDDLE LAKE, KILLARNEY and THE UPPER LAKE,  
KILLARNEY (A PAIR)

oil on canvas; (2)

signed and dated lower right and lower left  
respectively; both titled on reverse

20 x 40in. (50.80 x 101.60cm)

Estimate €1200-€1500 (approx £1044-£1305)

[Click Here for Large Images & To Bid Lot 208](#)



**209**

**William Darling McKay RSA (British, 1844-1924)**

POOL ON THE AIL WATER

oil on canvas

signed lower left; with gallery label on reverse

19¾ x 33in. (50.17 x 83.82cm)

*Provenance:*

The Antique Shop, 59 McCurtain Street, Cork;  
Private collection

Estimate €500-€700 (approx £435-£609)

[Click Here for Large Images & To Bid Lot 209](#)



**210**

**Norman Garstin (1847-1926)**

**FAIR SCENE WITH CATTLE AND PIGS**

watercolour

signed lower left

6¾ x 4½in. (17.15 x 11.43cm)

Estimate €400-€600 (approx £348-£522)

[Click Here for Large Images & To Bid Lot 210](#)



**211**

**Philip Bedingfield (British, 1828-1898)**

**SEAPOINT, COUNTY DUBLIN, c. 1863**

watercolour

with exhibition label on reverse

6¼ x 10¼in. (15.88 x 26.04cm)

Estimate €400-€600 (approx £348-£522)

[Click Here for Large Images & To Bid Lot 211](#)



**212**

**Philip Bedingfield (British, 1828-1898)**

PHOENIX PARK, c. 1863 (A PAIR)

ink and wash: (2)

with exhibition labels on reverse

6¼ x 10¼in. (15.88 x 26.04cm)

Estimate €400-€600 (approx £348-£522)

[Click Here for Large Images & To Bid Lot 212](#)



**213**

**Philip Bedingfield (British, 1828-1898)**

CARLINGFORD LOUGH, COUNTY LOUTH, c.1863

watercolour

6¼ x 10in. (15.88 x 25.40cm)

Estimate €300-€400 (approx £261-£348)

[Click Here for Large Images & To Bid Lot 213](#)





**214**

**Attributed to John Steeple (1823-1887)**

DHUV GLEN FROM MANGERTON and LOWER LAKE  
AND CROUGH MOUNTAIN and A VIEW OF ROSS  
CASTLE and UPPER LAKE (SET OF FOUR)

watercolour; (3); gouache; (1)

7 x 10in. (17.78 x 25.40cm)

Estimate €300-€500 (approx £261-£435)

[Click Here for Large Images & To Bid Lot 214](#)



**215**

**Thomas Walmsley (1763-1806)**

COASTAL SCENE

watercolour

10 x 14in. (25.40 x 35.56cm)

Estimate €400-€600 (approx £348-£522)

[Click Here for Large Images & To Bid Lot 215](#)



**216**

**Attributed to Giovanni Bernardo Lama (1508 - 1579)**

PIETA and THE ANGEL GABRIEL VISITS MARY (A PAIR)  
pencil, ink and wash; (2)  
10 x 6in. (25.40 x 15.24cm)

*Provenance:*

Collection of George and Maura McClelland

Estimate €200-€300 (approx £174-£261)

[Click Here for Large Images & To Bid Lot 216](#)



**217**

**After Jacobus Houbraken (1698 - 1780)**

PORTRAIT OF JOHN FISHER, BISHOP OF ROCHESTER and HENRY HOWARD, EARL OF SURREY (A PAIR)  
oil on copper; (2)  
inscribed  
10¾ x 8¾in. (27.31 x 22.23cm)

*Provenance:*

Collection of George and Maura McClelland

Estimate €200-€300 (approx £174-£261)

[Click Here for Large Images & To Bid Lot 217](#)



**218**

**Early 18th Century School**

MUSKETEER

watercolour, pastel and ink

8¼ x 5½in. (20.96 x 13.97cm)

*Provenance:*

Collection of George and Maura McClelland

Estimate €100-€150 (approx £87-£130)

[Click Here for Large Images & To Bid Lot 218](#)



**219**

**William Henry Hunt (1790 - 1864)**

THE PET OF THE VILLAGE

watercolour

signed, titled and inscribed [for George] on reverse

6¾ x 4¾in. (17.15 x 12.07cm)

*Provenance:*

Collection of George and Maura McClelland

Accompanied by William Henry Hunt 1790-1864:  
Water-Colors and Drawings from the Collection of  
Mr. & Mrs. Cyril Fry softcover catalogue, Froude &  
Co., London, 1967.

Estimate €500-€700 (approx £435-£609)

[Click Here for Large Images & To Bid Lot 219](#)





**220**

**Edward Hargitt (British, 1835-1895)**

IRISH PEASANTS GOING TO MARKET

oil on panel

signed lower left; signed, titled and numbered [11]

on label on reverse

10 x 14in. (25.40 x 35.56cm)

Estimate €500-€700 (approx £435-£609)

[Click Here for Large Images & To Bid Lot 220](#)



**221**

**Charles Francis De Klyn (American, 1865 - 1958)**

HARVEST SCENE, 1888

oil on canvas

signed and dated lower right

6½ x 15in. (16.51 x 38.10cm)

*Provenance:*

Collection of George and Maura McClelland

Estimate €200-€300 (approx £174-£261)

[Click Here for Large Images & To Bid Lot 221](#)



**222**

**Attributed to George Goodwin Kilburne (1839 - 1924)**

IN THE MUSIC ROOM

watercolour

signed lower left

10¼ x 8¼in. (26.04 x 20.96cm)

*Provenance:*

Collection of George and Maura McClelland

Estimate €200-€300 (approx £174-£261)

[Click Here for Large Images & To Bid Lot 222](#)



**223**

**Henry Barston (British, 19th Century)**

THREE GENERATIONS, 1868

oil on board

inscribed on reverse

7½ x 9¼in. (19.05 x 23½cm)

*Provenance:*

Collection of George and Maura McClelland

Estimate €300-€500 (approx £261-£435)

[Click Here for Large Images & To Bid Lot 223](#)



**224**

**William Henry Knight (British, 1823-1863)**

HAPPY DAYS

oil on panel

inscribed on label on reverse

7¾ x 9½in. (19.69 x 24.13cm)

*Provenance:*

Collection of George and Maura McClelland

Estimate €600-€800 (approx £522-£696)

[Click Here for Large Images & To Bid Lot 224](#)



**225**

**Charles Henry Slater (British, c. 1820 - 1890)**

STILL LIFE OF PUMPKIN, PEACHES AND GRAPES

watercolour

signed lower left

14 x 10½in. (35.56 x 26.67cm)

*Provenance:*

Collection of George and Maura McClelland

Estimate €200-€300 (approx £174-£261)

[Click Here for Large Images & To Bid Lot 225](#)





**226**

**William B. Hough (1819 - 1897)**

STILL LIFE WITH FRUIT

watercolour

signed lower right

7¾ x 9¾in. (19.69 x 24.77cm)

*Provenance:*

Collection of George and Maura McClelland

Estimate €200-€300 (approx £174-£261)

[Click Here for Large Images & To Bid Lot 226](#)



**227**

**Charles Henry Slater (British, c. 1820 - 1890)**

STILL LIFE OF A PINEAPPLE AND PLUMS ON A  
MOSSY , 1872

watercolour

signed and dated lower right

9½ x 13½in. (24.13 x 34.29cm)

*Provenance:*

Collection of George and Maura McClelland

Estimate €150-€200 (approx £130-£174)

[Click Here for Large Images & To Bid Lot 227](#)



**228**

**Alfred II Ludovici (1852 - 1932)**

READING THE TEA LEAVES

watercolour

signed lower left

13½ x 9½in. (34.29 x 24.13cm)

*Provenance:*

Collection of George and Maura McClelland

Estimate €200-€300 (approx £174-£261)

[Click Here for Large Images & To Bid Lot 228](#)



**229**

**Attributed to Albert II Ludovici (1852 - 1932)**

FEMALE FIGURE READING

watercolour

signed lower right

14 x 9½in. (35.56 x 24.13cm)

*Provenance:*

Collection of George and Maura McClelland

Estimate €200-€300 (approx £174-£261)

[Click Here for Large Images & To Bid Lot 229](#)





**230**

**Victor L. Prescott (British, 19/20th Century)**

SERVING COFFEE

watercolour

signed lower right

15¾ x 11¾in. (40.01 x 29.85cm)

*Provenance:*

Collection of George and Maura McClelland

Estimate €80–€120 (approx £69.6–£104.4)

[Click Here for Large Images & To Bid Lot 230](#)



**231**

**Felice Piccione (c.1800 - c.1870)**

PORTRAIT OF MARCUS WARD

charcoal and wash

16¾ x 13in. (42.55 x 33.02cm)

*Provenance:*

Collection of George and Maura McClelland

*Literature*

Felice Piccione was an Italian artist brought to Belfast by publisher Marcus Ward. He did portraits in chalk and in oil and had a good practice in Belfast and the north of Ireland. In 1834 he exhibited a "Portrait of Professor Bertinchamp" in the Royal Hibernian Academy. He afterwards settled in Cork where he did caricatures, including "Bothered Dan and Foxy Norry," two well-known mendicants, which was reproduced in the Journal of the Cork Archaeological Society in 1892 when it was in the possession of Mr. Edwin F. Hunt. A "Family Group" by him was in the Cork Art Union Exhibition. Two small portraits in chalk, signed and dated 1840, belong to Bishop Stack at Knockballymore, and a portrait in black and white chalks, dated 1839, of "James Moore, M.D.," belongs to Mr. F. A. C. Mills, Cliftonville, Belfast.

Estimate €500–€700 (approx £435–£609)

[Click Here for Large Images & To Bid Lot 231](#)





**232**

**18th/19th Century Irish School**

PORTRAIT OF JANET CATHERINE GROGAN, WIFE OF SIR JONAH BARRINGTON, MARRIED IN DUBLIN, 1789

oil on canvas

inscribed on reverse

16 x 12¼in. (40.64 x 31.12cm)

Sir Jonah Barrington (1756/7-1834), was an Irish lawyer, judge and politician. Jonah Barrington is most notable for his amusing and popular memoirs of life in late 18th-century Ireland; for his opposition to the Act of Union in 1800; and for his removal from the judiciary by both Houses of the Parliament in 1830, still a unique event.

Estimate €300-€500 (approx £261-£435)

[Click Here for Large Images & To Bid Lot 232](#)



**233**

**Amy Katherine Browning (British, 1882-1978)**

STUDY FOR A PORTRAIT OF A WOMAN

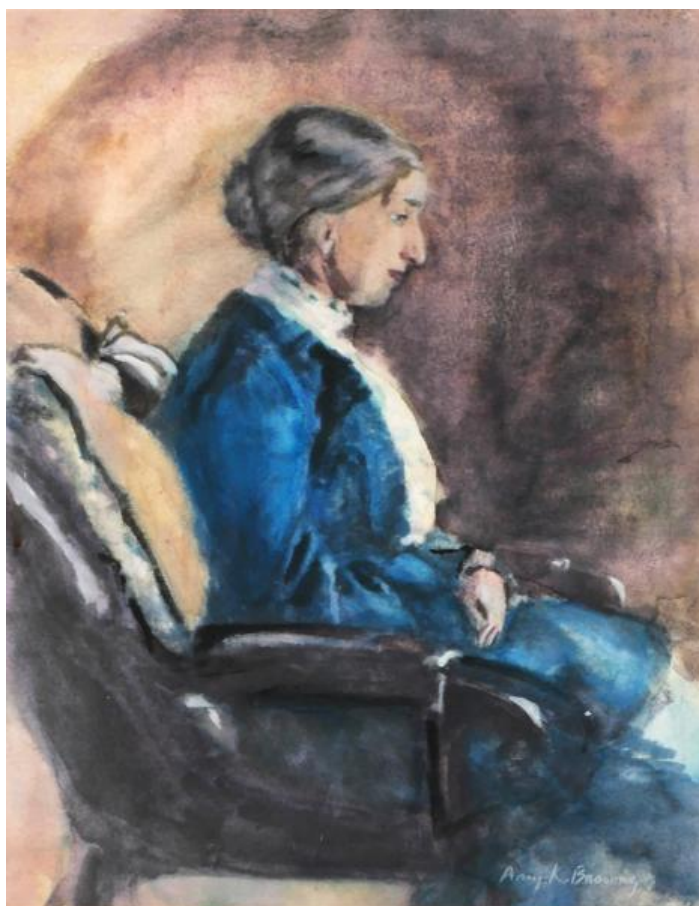
watercolour

signed lower right

11½ x 9in. (29.21 x 22.86cm)

Estimate €400-€600 (approx £348-£522)

[Click Here for Large Images & To Bid Lot 233](#)



**234**

**20th Century British School**

BOY READING A BOOK

watercolour over pencil

7 x 5in. (17.78 x 12.70cm)

*Provenance:*

Collection of George and Maura McClelland

Estimate €200-€300 (approx £174-£261)

[Click Here for Large Images & To Bid Lot 234](#)



**235**

**Gregor Grey (fl.1870s-1911)**

DUCKLINGS, 1893

oil on canvas

signed and dated lower left

13½ x 20¾in. (34.29 x 52.71cm)

Gregor Grey was the son of Charles Grey RHA (c.1808-1892) and brother of the painters Alfred Grey RHA (1845-1926), Edwin Landseer Grey and James Grey and the engraver Charles Malcolm Grey. Gregor exhibited every year at the RHA from 1877-1911, averaging three to four exhibits a year - the most that a non-RHA member could possibly hope to have accepted. He also showed twice at the Oireachtas Art Exhibitions of 1906 and 1907. His works tended to be on a rustic theme and featured quaint, anecdotal titles. Grey earned - albeit unwittingly - some modicum of posterity when James Joyce included in *Ulysses* a character called Gregor Grey who was the designer of Gallaher's map and whose career was given "a leg up" by illustrating an advertisement.



Estimate €700-€1000 (approx £609-£870)

[Click Here for Large Images & To Bid Lot 235](#)

**236**

**Sir John Lavery RA RSA RHA (1856-1941)**

A LADY IN BLACK - MISS ESTHER MCLAREN and  
MARY IN GREEN (A PAIR)

engraving; (2) (no. 150 from an edition of 160)

signed lower right; numbered lower left; with label  
affixed verso detailing the edition number

7¼ x 5¾in. (18.42 x 14.61cm)

Sheet size: 12.5 by 8.5in.

Estimate €400-€500 (approx £348-£435)

[Click Here for Large Images & To Bid Lot 236](#)





**237**

**Jack Butler Yeats RHA (1871-1957)**

THE STRAND RACES: THE START AND THE FINISH (A PAIR)

hand-coloured Cuala Press print; (2); (framed uniformly)

each signed in the plate lower left

5½ x 17½in. (13.97 x 44.45cm)

*Provenance:*

Whyte's, 4 March 2013, lot 68:

Private collection

The original ink and watercolour drawings for these prints date to c.1906 and were exhibited in London in 1913. They were later reproduced in the Dún Emer catalogue, October 1907 and prospectus, May 11908: Cuala Print (4)



Estimate €600-€800 (approx £522-£696)

[Click Here for Large Images & To Bid Lot 237](#)

**238**

**Jack Butler Yeats RHA (1871-1957)**

THE ARROW GAME

woodcut in colours

signed in plate lower right; also inscribed [The arrow game, a kind of roulette] in the plate

5¾ x 3¾in. (14.61 x 9.53cm)

Estimate €200-€300 (approx £174-£261)

[Click Here for Large Images & To Bid Lot 238](#)



**239**

**Jack Butler Yeats RHA (1871-1957)**

THE CUTTLE-FISH

woodcut in colours

signed in the plate lower right

6 x 3¾in. (15.24 x 9.53cm)

Estimate €200-€300 (approx £174-£261)

[Click Here for Large Images & To Bid Lot 239](#)



**240**

**Percy Wyndham Lewis (1882-1957)**

THE ENEMY. A REVIEW OF ART AND LITERATURE

[VOL. I] JANUARY 1927

first edition in red leather boards

signed by British artist Helen Kapp and dated [1927]

in blue ink on first (advertisement) page

11¼ x 7½in. (28.58 x 19.05cm)

*Provenance:*

Collection of George and Maura McClelland

Wyndham Lewis founded, edited and published The Enemy. He was a contemporary of T.S. Eliot and Ezra Pound and author of novels such as The Revenge for Love, The Apes of God, and Tarr as well as a visual artist. His portrait of Eliot can be found in the Durban Art Gallery in South Africa. Helen Kapp (1901-1978) - whose signature appears on this copy - was a British painter, illustrator, wood engraver and curator. She studied at the Slade School of Fine Art, the Central School of Arts and Crafts and also in Paris and exhibited at the Royal Academy among other institutions.

Also with this lot is a Carte du Jour designed by Wyndham Lewis for the Restaurant de la Tour Eiffel, 1. Percy Street, Tottenham Court Road, London W.

Estimate €60-€80 (approx £52-£69)

[Click Here for Large Images & To Bid Lot 240](#)



**241**

**George Finch Mason (1850-1915)**

**HUMOURS OF THE HUNTING FIELD [1886]**

first edition publication

14 x 19½in. (35.56 x 49.53cm)

*Provenance:*

Collection of George and Maura McClelland

Published by Messers Fores, 41 Piccadilly W., 1886.  
First edition, with pictorial wood engraved titlepage,  
16 wood engraved hunting plates by Finch Mason  
printed on a tinted ground and a pictorial wood  
engraved advertisement leaf at end, oblong folio,  
original half brown cloth with coloured pictorial  
paper covered upper cover and plain paper covered  
lower cover. Shows extensive wear to the boards;  
however the 16 plates remain in good condition.



Estimate €80-€120 (approx £69-£104)

[Click Here for Large Images & To Bid Lot 241](#)

End of Sale



Ansell, Montgomery: 208  
 Armstrong, Arthur: 93  
 Ballagh, Robert: 108-110  
 Bannon, John T.: 172, 173  
 Barston, Henry: 223  
 Bedingfield, Philip: 211-213  
 Birch, Samuel John Lamorna: 191  
 Blackshaw, Basil: 88-92  
 Bourke, Brian: 70, 71  
 Bowen, Christine: 101  
 Bradley, Micheen: 119  
 British School, 20th Century: 234  
 Brown, Christy: 142  
 Browning, Amy Katherine: 233  
 Campbell, George: 177  
 Carey, Joseph William: 197, 198  
 Carr, Tom: 134-137  
 Casson, Michael: 115  
 Clear, Ciarán: 149  
 Conor, William: 39-43  
 Cope, Elizabeth: 152  
 Corser, Trevor: 116  
 Costelloe, Eileen: 75  
 Craig, James Humbert: 193  
 Cronin, John: 100  
 Crozier, William: 96  
 Cullen, Stephen: 151  
 Cullen, Tom: 168-170  
 De Klyn, Charles Francis: 221  
 Donovan, Jack: 143, 144  
 Donovan, Phoebe: 129  
 Dunne, George: 28  
 Earley, Leo: 147  
 Eggestorff, Paul: 128  
 Egginton, Frank: 181  
 Fay, James S.: 141  
 Ferran, Brian: 69  
 Finch Mason, George: 241  
 Frith, David: 117  
 Garstin, Norman: 210  
 Grey, Gregor: 235  
 Hargitt, Edward: 220  
 Hayes, Brendan: 161  
 Henderson, Neville: 150  
 Hickey, Patrick: 97  
 Hill, Rowland: 174-176  
 Houbraken, After Jacobus: 217  
 Hough, William B.: 226  
 Hunt, William Henry: 219  
 Irish School, 18th/19th Century: 232  
 Irish School, Late 19th/Early 20th Century: 200  
 Irish School, 20th Century: 121  
 Joyce, Mark: 103

Kilburne, Attributed to George Goodwin: 222  
 King, Cecil: 105  
 King, Gordon: 162  
 Kingston, Richard: 98  
 Knight, William Henry: 224  
 Lama, Attributed to Giovanni Bernardo: 216  
 Larkin, Diarmuid: 160  
 Lavery, Sir John: 236  
 Lawlor, Stephen: 94  
 le Roy, David French: 153  
 Leonard, Patrick: 6-26  
 Llewellyn, Eoin: 111  
 Ludovici, Alfred II: 228  
 Ludovici, Attributed to Albert II: 229  
 MacCann, George Galway: 74, 167  
 MacKinnon, Sine: 124  
 Madani (Iranian, 20th century): 73  
 Madden, Bernadette: 72  
 Martin, Liam C.: 171  
 Mason, William: 29-38  
 McAdoo, Violet: 189, 190  
 McEntagart, Brett: 157, 158  
 McKay, William Darling: 209  
 McKelvey, Frank: 180  
 McKenna, Alex: 145, 146  
 Meagher, Eileen: 148  
 Middleton, Colin: 106  
 Minihan, John: 112, 113  
 Moss, Henry William: 199  
 Moutray Kyle, Georgina: 195, 196  
 Nash, Attributed to Tom: 27  
 O'Connor, Sean: 186-188  
 O'Malley, Jane: 87  
 O'Malley, Tony: 76-86, 114  
 O'Neill Gallagher, Frederick: 194  
 O'Neill, Michael: 164, 165  
 Orpen, Bea: 130  
 Osborne, Jean: 133  
 Overend, David Anthony: 159  
 Paignant, Hélène: 178  
 Park, John Anthony: 192  
 Piccione, Felice: 231  
 Prescott, Victor L.: 230  
 Rayner, Donald: 185  
 Rivers, Elizabeth: 126, 127  
 Robinson, Markey: 44-68  
 Romero, Joan Carrillo: 118  
 Ryan, Thomas: 138-140  
 Sabino, Marius-Ernest: 122  
 Skelton, John: 1-5  
 Slater, Charles Henry: 225, 227  
 Solomons, Estella Frances: 125  
 Spry, U.: 179

Stanley, Jacqueline: 163  
Steeple, Attributed to John: 214  
Swanzy, Mary: 123  
Sweeney, Joe: 104  
Teeling, Norman: 155, 156  
Treacy, Liam: 154  
Tyrrell, Charles: 107  
van der Grijn, Erik: 99  
Walker, David Bond: 184  
Walmsley, Thomas: 215  
Walsh, Manus: 102  
Walsh, Owen: 166  
Wilks, Maurice Canning: 182, 183  
Williams, Alexander: 202-207  
Wilson, Ross: 95  
Wollen, Thomas: 120  
Wyndham Lewis, Percy: 240  
Wynne, Gladys: 201  
Yeats, Anne: 131, 132  
Yeats, Jack Butler: 237-239